

Presentation:
Coded

STS-System Benefits

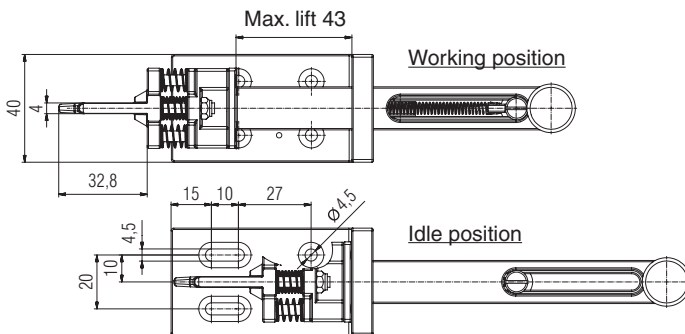
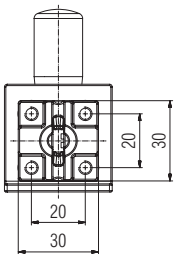
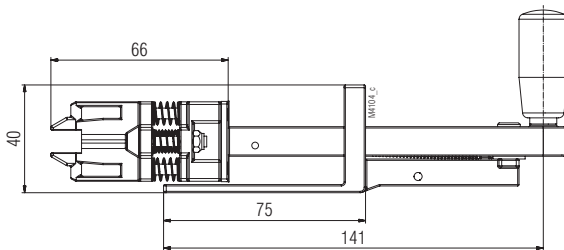
- EU-Test certificate according to the directive 2006/42/EG, annex IX
- For safety applications up to PLe/Category 4 according to EN/ISO 13849-1
- Modular and expandable system
- Rugged stainless steel design
- Wireless mechanical safeguarding
- Combines the benefits of safety switch, locking module and key transfer in a single system
- Easy installation through comprehensive accessories
- Protection against lock-in
- Coding level low, medium, high according to DIN EN ISO 14119:2014-03

Features STS-CS

- Actuator with sliding bolt
- Flexible and adjustable actuator
- Can be coded
- Optionally with release function
- Manual adjustment of vertical offset during operation

Dimensional Drawing [mm]

Presentations show the coded version



Approvals and Marking



Application

The actuator STS-CS series is used in connection with the SAFEMASTER STS units which are equipped with integrated actuator modules A, B, D, E OR K. Generally, the actuators are fitted to the movable part of a separating guard and are used to switch the associated STS unit.

Design and Operation

The actuator STS-CS consists of a flexible actuator STS-C and additional door handle. It serves as a door bolt on hinged doors. Its special construction permits height differences of ± 6 mm between door bolt and actuator module. Therefore, this will compensate for installation inaccuracies. Moreover, the actuator STS-CS is designed for high shearing and tension forces to the extent that overload breaks can be largely excluded. Refer to data sheet STS-C for the adjustment of incline and radius of the CS Actuator.

In situations such as safety entries which can be slammed shut with such a great force that the more simple actuators STS-T and STS-C can no longer ensure a perfect function of the actuator module, the CS actuators are used.

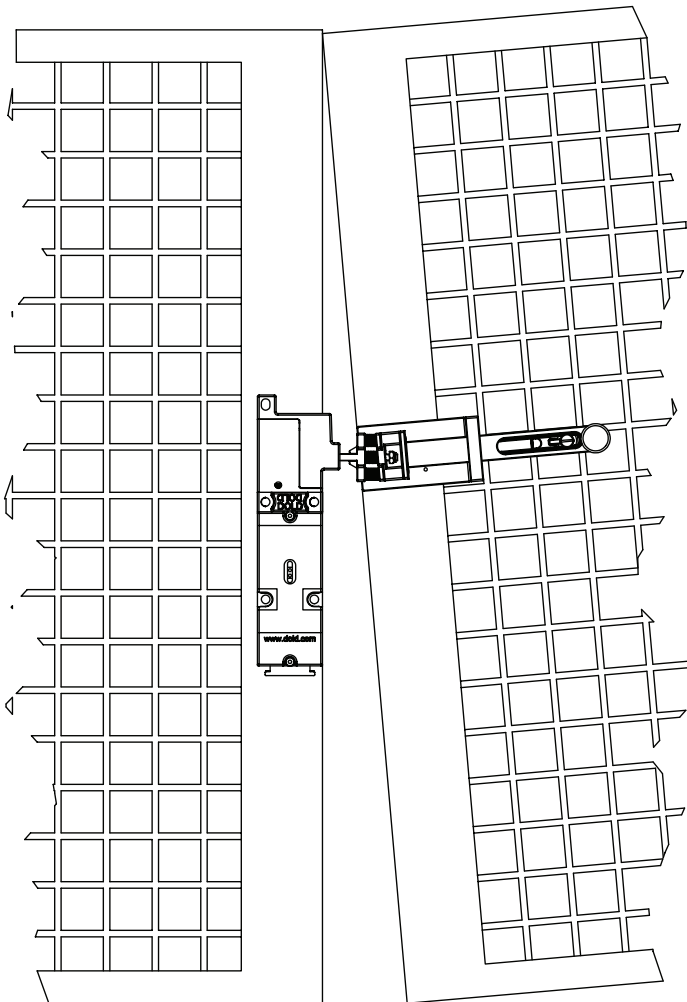
The actuator STS-CS is designed in such a way that in a damaged condition, that is, with screws coming loose, it still keeps the hinged door secured by it reliably locked.

ATTENTION!



Prerequisite: The gap to safety gate and door frame must be smaller than 15 mm.

Inaccurate door adjustment



M4127_a

Variants

CS1

If the actuator STS-CS is to be fitted in a vertical position, the STS-CS1 version is to be selected. It was specifically designed for vertical installation and is equipped by a stronger return spring. This also pulls the actuator safely up against the gravitational force. The installed C-actuator is mounted rotated by 90°.

CS2

This version has a limited vertical offset

CS3

This version is equipped with a stronger return spring for vertical installation. The installed C-actuator is not installed rotated.

CKS

The STS-CS can also be coded. The delivery of this coded actuator is always done in pairs with an associated coded actuator module D or E. Different types of coding are available. The coding used will not be identified on the actuator. The product designation then becomes CKS. Coding level medium according to DIN EN ISO 14119:2014-03

CSF

In addition, these actuators can be designed with an opening of escape release function (pull cable with handle). In this case, the product designation receives the letter F in addition.

Examples: CSF or CKSF actuator.

Refer to the customer information for additional details on selecting the actuator.

Accessories

CS mounting plate

To facilitate mounting to machines and plants
(see separate data sheet STS-CS mounting plate)

Ordering Designation

Actuator STS-CS

Article number: 0062334

Actuator STS-CS1

Article number: 0063749

Actuator STS-CS2

Article number: 0064327

Actuator STS-CS3

Article number: 0064857

Actuator STS-CKS

Article number: 0063968

Actuator STS-CSF

Article number: 0065112