



MAFELEC TEAM

CREATING TOGETHER SMART AND
SUSTAINABLE INTERFACES

SOLUTIONS FOR TRAINS



SOLUTIONS IN CONTINUOUS IMPROVEMENT

ALWAYS LOOKING AHEAD TO DEVELOP TOMORROW'S SOLUTIONS

Since 2021 and the integration of TSL-ESCHA into MAFELEC TEAM, we have been committed to building new ways of working so that MAFELEC's french teams and TSL-ESCHA's german teams are moving in the same direction. As a result, all our products combine **innovative technologies** and **robust manufacturings** needed to meet specific requests of each of our clients.

Our experience in railway sector is well established. Our electronic, electromechanical, optical and thermal engineering offices, and all the strenghts of TSL-ESCHA and MAFELEC, work with only one goal in mind: **continuous improvement**, pillar of MAFELEC TEAM. We want to create a new railway world that is smoother, safer, more economical and more ergonomic.

The **sustainability** of our solutions is of paramount importance to us, so that we can make our own contribution to preserving our planet. That's why we are developing new robust tools that enable our partners to implement **sustainable predictive maintenance**.

All our solutions are compliant with the **latest railway standards**.

Designing safer, smarter, cheaper and more flexible sustainable solutions...



M-Light range - MAFELEC TEAM

MAFELEC TEAM AT OUR PARTNER CUSTOMERS SERVICE

ADAPTABILITY, REACTIVITY AND DIVERSITY

As MAFELEC TEAM members, our TSL-ESCHA's and MAFELEC's teams work together to develop, design and market a wide variety of solutions for the railway market.

A single motto for MAFELEC TEAM: **to meet the needs of our customers**, whether they are manufacturers, local authorities or operators. At MAFELEC TEAM, our strength lies in our ability to adapt to any situation and any request. In fact, we make it a point of honour to offer our customers **advanced customization** for each of their products.

Door opening or driver desk pushbuttons, exteriors lighting or interior signal lights, current sensors or power switches,... our wide range of products enable us to offer many various solutions for railway material.

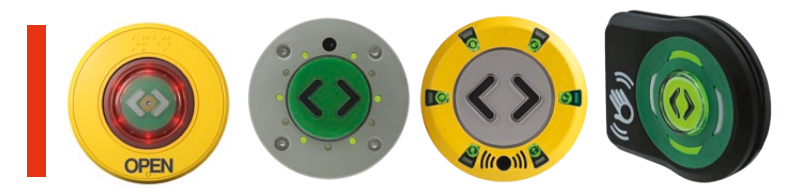
A huge diversity of cost effective railway solutions and many possibilities of customization, these are the strenghts of MAFELEC TEAM.



Pushbuttons range - MAFELEC TEAM

DOOR EQUIPMENT

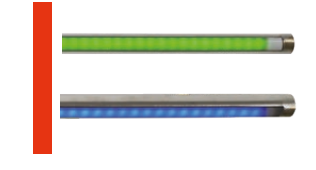
PUSHBUTTONS



CREW SWITCH



LIGHT STRIPS



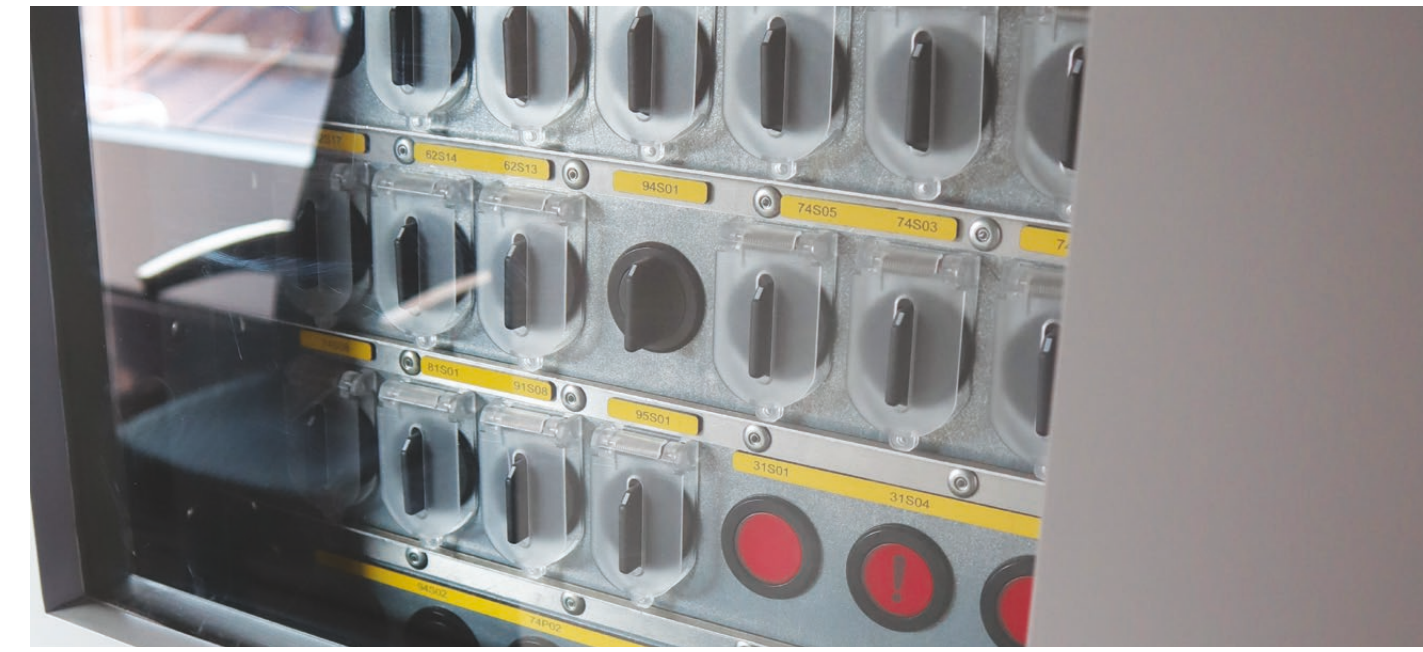
SOUNDERS



SIGNAL LIGHTS

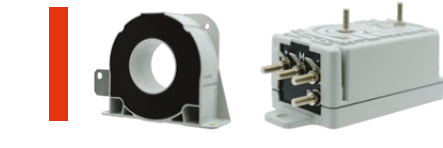


DOOR INDICATOR LIGHTS



POWER AND DETECTION

CURRENT AND VOLTAGE SENSORS



POWER SWITCHES



INSULATORS AND BUSHINGS



CIRCUIT BREAKERS

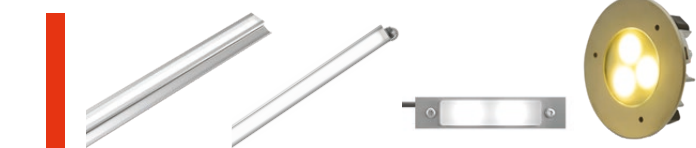


EXTERIOR / INTERIOR LIGHTING

FRONT LIGHTING AND EXTERIOR LIGHTING SIGNATURE



INTERIOR LIGHTING

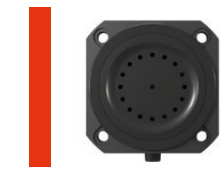


LAVATORIES

PUSHBUTTONS



SOUNDERS



SIGNAL LIGHTS



PASSENGER COMFORT

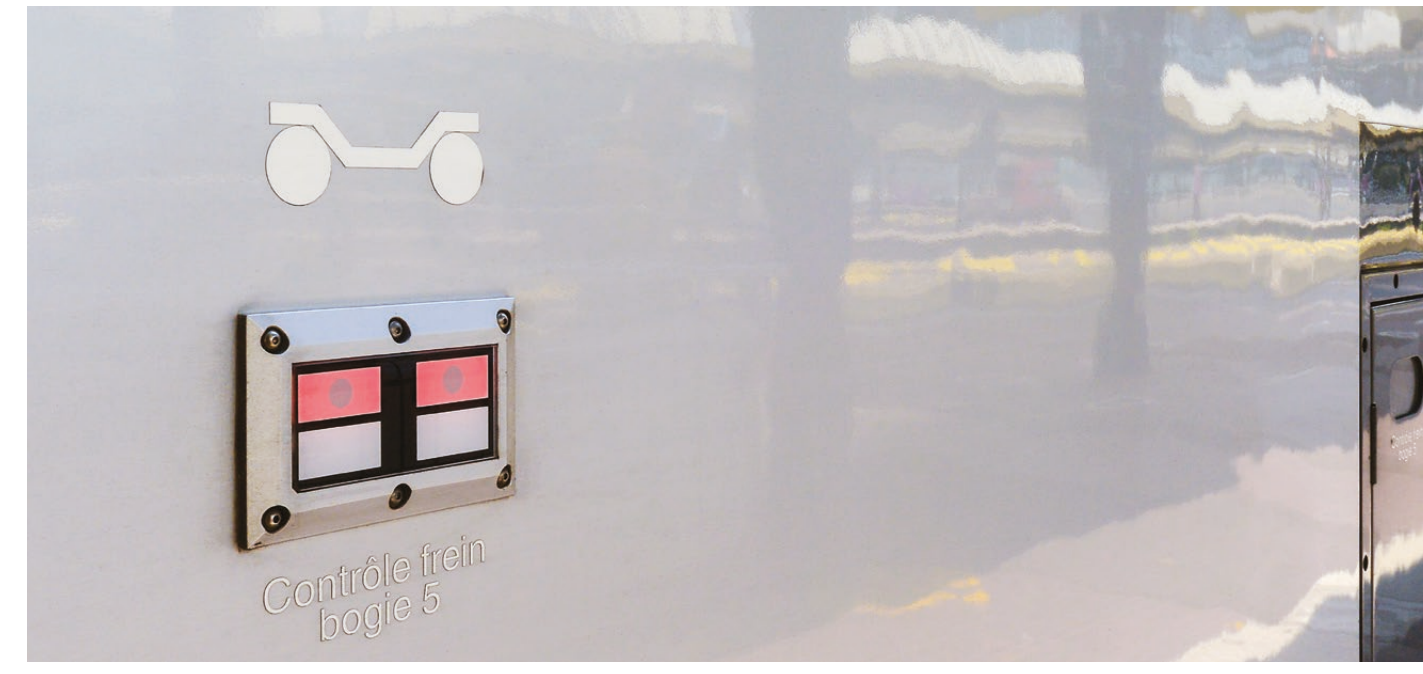
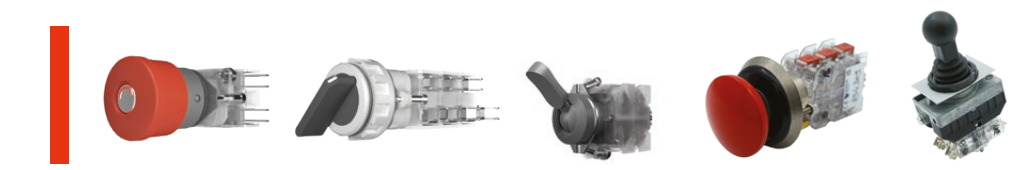
SOCKETS



READING LIGHT



DRIVER DESK

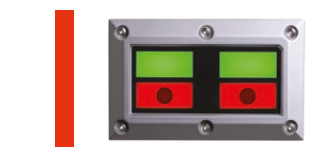


SAFETY SOLUTIONS

DEAD MAN PEDAL



BRAKE INDICATOR



EMERGENCY PUSHBUTTON

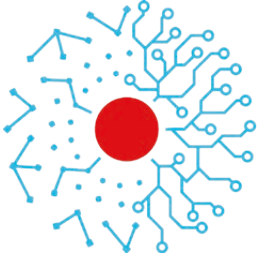


ALARM HANDLE



SIGNAL BOX





MAFELEC TEAM

CREATING **TOGETHER** SMART AND SUSTAINABLE INTERFACES

MAFELEC TEAM is a family of nine entities located in different countries: France, Germany, Poland, China and United Kingdom. MAFELEC TEAM is specialist in development and design of solutions for harsh environments and demanding markets such as railway, aeronautics, defense, energy, industry and buses.

Continuously expanding and always looking to the world's future, MAFELEC TEAM is today a key player with international recognition in its various markets.



471, Route de la Cuisinière
38490 Chimilin | France
T +33 4 763 207 33
contact@mafelec.com
www.mafelec.com



Elberfelder Straße 1
58553 Halver | Allemagne
T +49 2353 66796-0
info@tsl-escha.com
www.tsl-escha.com

MEMBERS OF MAFELEC TEAM

