

Checklist Hand Rail Button HST



Please fill out the checklist as completely as possible and send the PDF document to: info@tsl-escha.com
After checking the conformity of the checklist, you will receive a final article drawing in which the product is clearly described. In addition, you will receive an attractive offer according to your specifications. We will also be happy to complete the checklist together with you. Please call us if required: +49 2353/66796-0

CUSTOMER INFORMATION

Company:

Name:

Address:

Phone:

E-Mail:

Date:

Project:

Quantity:

Quantity 1. year:

Quantity 2. year

Quantity 3. year

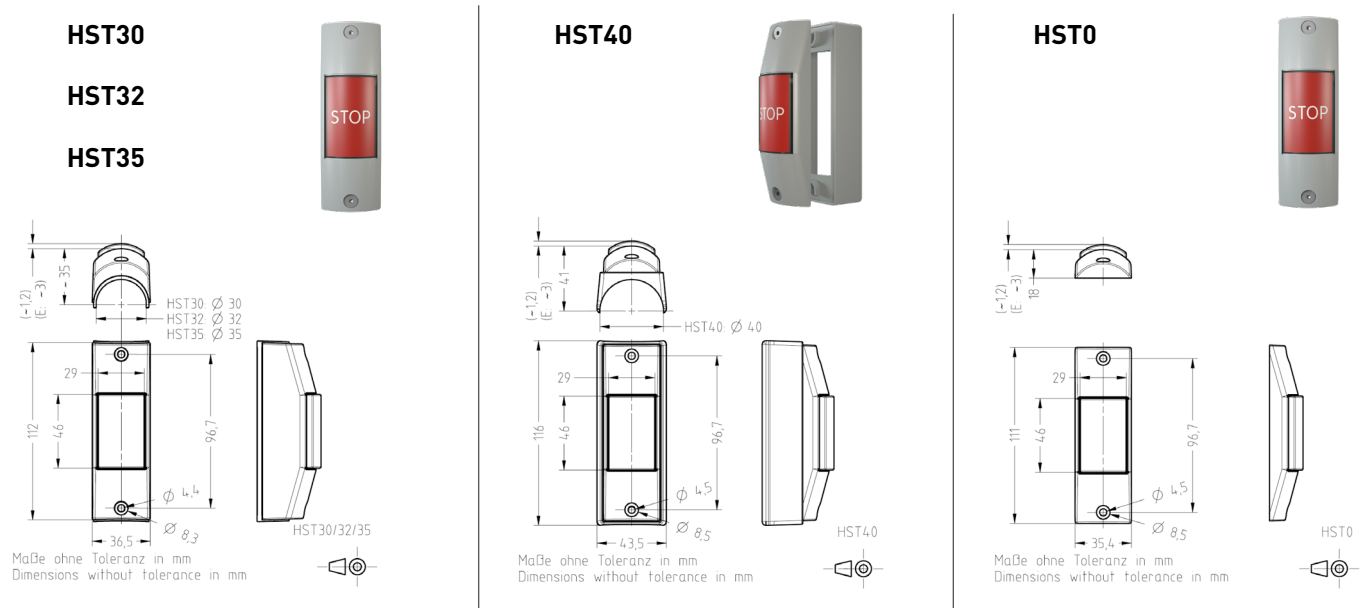
Note:

Product Highlights

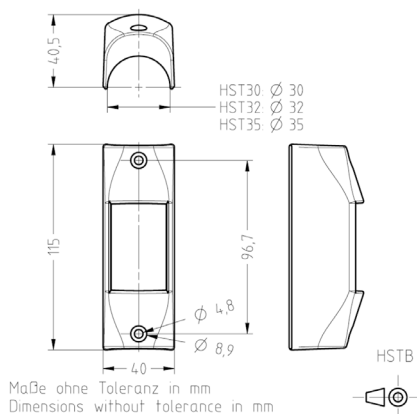
- Hand rail buttons in various designs and mounting shapes
- Large selection of colors, texts and pictographs
- Raised tactile symbols on the push buttons
- Easy to press thanks to large push buttons
- Optional selection of lighting, braille, touch protection, vibration or acoustic feedback
- Complies with the current standards for rail vehicles (TSI-PRM, EN 50155 and EN 61373)

1 CONSTRUCTION TYPE

Mounting variants for different retaining bar diameters (30, 32, 35, 40 mm) and the wall panel



HSTB Additional Housing for Contact protection

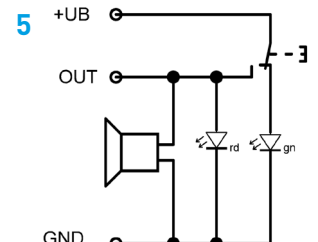
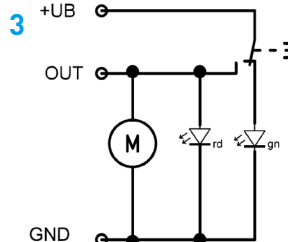
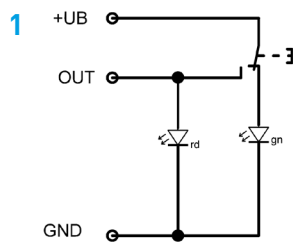
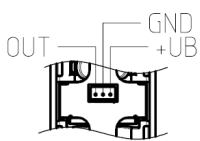


2 SELECTION OF FUNCTIONS

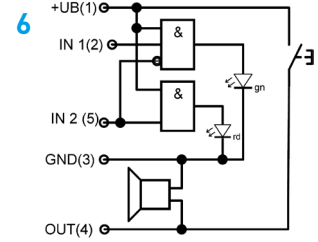
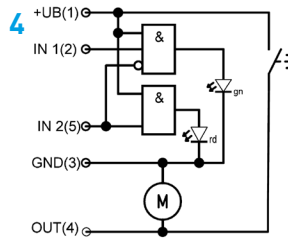
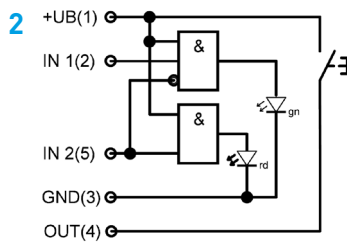
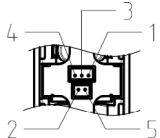


	HST	HSTI 3pol	HSTI 5pol	HSTIV 3pol	HSTIV 5pol	HSTIA 3pol	HSTIA 5pol
Connection	2x Flachstecker 6,3 x 0,8 mm	JST-B3B-XH-A	JST-B3B-XH-A + JST-B2B-XH-A	JST-B3B-XH-A	JST-B3B-XH-A + JST-B2B-XH-A	JST-B3B-XH-A	JST-B3B-XH-A + JST-B2B-XH-A
Illuminated LED1 = green at +UB LED2 = red		●		●		●	
Illuminated Separate control- lable LED1 = green LED2 = red			●		●		●
Haptic feedback				●	●		
Acoustic feedback						●	●
Circuit diagrama		1	2	3	4	5	6

3pol connection



5pol connection



3 OPTIONAL CONNECTION CABLE FOR HSTI, HSTIV, HSTIA

150mm cable 0,35mm² according to ECE-R118

Without

L = ca. 150 mm

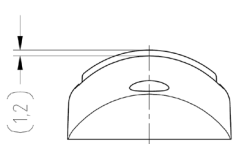
4 HOUSING COLOR

RAL 1003	RAL 1018	RAL 1023	RAL 1028	RAL 2004	RAL 3000
RAL 3020	RAL 5002	RAL 5015	RAL 5017	RAL 6018	RAL 6024
RAL 7001	RAL 7012	RAL 7015	RAL 7016	RAL 7035	RAL 7042
			RAL tone or color tone on request		
RAL 7043	RAL 9004	RAL 9016			

5 TOUCH SURFACE

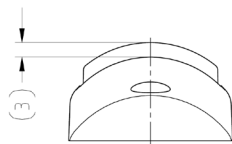
BT00 Plan	BT02 Tactile „X“	BT04 Tactil „<>“	BT5 tactiles „H“
BT07 Braille „sos“	BT01 Braille „stop“	BT03 Braille „auf-open“	BT08 Braille „stop“

Touch Surface flat



Maße ohne Toleranz in mm
Dimensions without tolerance in mm

Touch Surface raised



Maße ohne Toleranz in mm
Dimensions without tolerance in mm









6 PICTOGRAPHS

						
B01 RAL 3020/RAL 9016	B02 RAL 6024/RAL 9016	B03 RAL 5015/RAL 9016	B04 RAL 1018/RAL 9017	B18 RAL 3020/RAL 9016	B22 RAL 7043/RAL 9016	B23 RAL 1028/RAL 5002
						
B40 RAL 5010/RAL 9016	B55 RAL 1023/RAL 9016	B56 RAL 3000/RAL 9016	B68 RAL 3020/RAL 9017	B85 RAL 3001/RAL 9016	B92 RAL 6018/RAL 9016	B95 RAL 9006/RAL 9017
						
B101 RAL 9016/RAL 9017	B106 RAL 1023/RAL 9017	B108 RAL 1018/RAL 9016	B110 RAL 9016/RAL 3020	B120 RAL 5002/RAL 9016	B128 RAL 7012/RAL 9016	B127 RAL 1018/RAL 9017
						
B14 RAL 3020/RAL 9016	B15 RAL 6024/RAL 9016	B43 RAL 5015/RAL 9016	B44 RAL 1018/RAL 9017	B31 RAL 7042/RAL 9017	B52 RAL 3020/RAL 9016	B57 RAL 5015/RAL 9016
						
B81 RAL 6024/RAL 9016	B115 RAL 1018/RAL 9017	B116 RAL 1023/RAL 9017	B124 RAL 9016/RAL 9017	B54 RAL 5015/RAL 9016	B13 RAL 5015/RAL 9016	B17 RAL 3020/RAL 9016
						
B10 RAL 6024/RAL 9016	B19 RAL 3020/RAL 9016	B29 RAL 3020/RAL 9016	B32 RAL 5015/RAL 9016	B60 RAL 7043/RAL 9016	B65 RAL 9016/RAL 9017	B09 RAL 1018/RAL 9017
						
B16 RAL 9006/RAL 9017	B38 RAL 6024/RAL 9016	B112 RAL 3020/RAL 9016	B113 RAL 3020/RAL 9017	B90 RAL 6024/RAL 9016	B123 RAL 5015/RAL 9016	B07 RAL 5015/RAL 9016
						
B08 RAL 1018/RAL 9017	B36 RAL 5002/RAL 9016	B39 RAL 5022/RAL 9003	B59 RAL 5017/RAL 9016	B62 RAL 3020/RAL 9016	B63 RAL 9016/RAL 5015	B77 RAL 5005/RAL 9016
						
B78 RAL 7043/RAL 9016	B42 RAL 5010/RAL 9016	B114 RAL 1018/RAL 9016	B20 RAL 5015/RAL 9016	B91 RAL 5022/RAL 9016	B94 RAL 5022/RAL 9003	B45 RAL 5017/RAL 9016

6 PICTOGRAPHS

 B117 RAL 5015/RAL 9016	 B122 RAL 5015/RAL 9016	 B50 RAL 1018/RAL 9017	 B87 RAL 5015/RAL 9016	 B100 RAL 9016/RAL 5015	 B119 9016/RAL 9017	 B119 RAL 9016/RAL 9017
 B66 RAL 5015/RAL 9016	 B05 RAL 5015/RAL 9016	 B06 RAL 1018/RAL 9017	 B41 RAL 5010/RAL 9016	 B61 RAL 3020/RAL 9016	 B74 RAL 7043/RAL 9016	 B76 RAL 5005/RAL 9016
 B99 RAL 9016/RAL 5015	 B118 RAL 9016/RAL 9017	 B21 RAL 5015/RAL 9016	 B125 RAL 5017/RAL 9016	 B126 RAL 9016/RAL 5017	 B26 RAL 5015/RAL 9016	 B12 RAL 5015/RAL 9016
 B49 RAL 3020/RAL 9016	 B75 RAL 5005/RAL 9016	 B79 RAL 7043/RAL 9016	 B93 RAL 1018/RAL 9017	 B98 RAL 9016/RAL 5015	 B102 RAL 6018/RAL 9016	 B104 RAL 1018/RAL 9016
 B105 RAL 3001/RAL 9016	 B109 RAL 9016/RAL 9017	 B111 RAL 6024/RAL 9016	 B58 RAL 5015/RAL 9016	 B103 RAL 1018/RAL 9017	 B107 RAL 3020/RAL 9016	 B80 RAL 3020/RAL 9016
 B24 RAL 3020/RAL 9016	 B51 RAL 1018/RAL 9017	 B69 RAL 3020/RAL 9016	 B84 RAL 1023/RAL 3020	 B30 RAL 3020/RAL 9016	 B70 RAL 3020/RAL 9016	 B27 RAL 3020/RAL 9016
 B28 RAL 6024/RAL 9016	 B33 RAL 5017/RAL 9016	 B34 RAL 5017/RAL 9016	 B35 RAL 3020/RAL 9016	 B46 RAL 5015/RAL 9016	 B47 RAL 5015/RAL 9016	 B48 RAL 3020/RAL 9016
 B53 RAL 3020/RAL 9016	 B64 RAL 1018/RAL 9017	 B121 RAL 9006/RAL 9017	 B67 RAL 3020/RAL 9016	 B97 RAL 1023/RAL 3020	 B72 RAL 6024/RAL 9016	 B73 RAL 3020/RAL 9016
 B82 RAL 3020/RAL 9016	 B86 RAL 7043/RAL 9016	 B88 RAL 5017/RAL 9016	 B89 RAL 3020/RAL 9016	 B71 RAL 3020/RAL 9016	 B83 RAL 9016/RAL 9017	 B37 RAL 5002/RAL 9016

6 PICTOGRAPHS

 B25 RAL 3020/RAL 9016	 B96 RAL 5017	 F02 RAL 6024	 F03 RAL 5015	 F04 RAL 1018	 F05 RAL 5017	 F06 RAL 7012
 F01 RAL 3020						