

## MINITIMER Staircase Lighting Time Switch IK 8810/001

Translation  
of the original instructions



### Your Advantages

- Energy saving
- Increase of the service life of the lamps

### Features

- According to EN 60669-1, EN 60669-2-1
- Setting range 0.5 ... 10 min.
- For 3-wire circuit N on push button
- Can be not retrigged
- Switch for continuous light on unit
- Contact: 16 A
- Width 17.5 mm

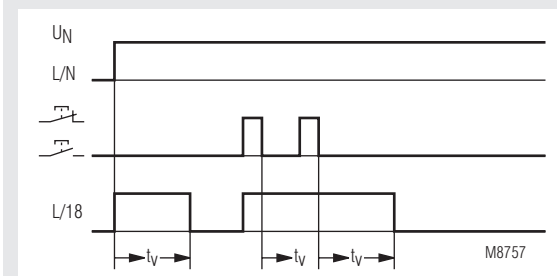
### Product Description

The Staircase lighting time switch IK 8810/001 of the MINITIMER series has an adjustable running time and can be switched to continuous lightning by means of a slide switch.

### Approvals and Markings



### Function Diagram



### Application

- Staircase lighting time switch
- Timer, release delay

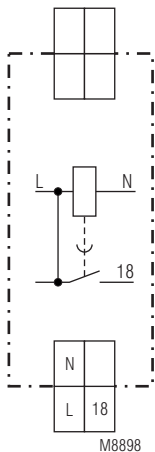
### Function

The timing is not retrigged.

### Indication

LED: On when output relay activated

### Circuit Diagram



### Notes

Unit and push button have to be connected to the same phase (see connection diagram) The output contact is not volt free.

### Connection Terminals

Terminal designation	Signal description
L	Phase voltage
N	Neutral
18	Output contact

## Technical Data

### Time Circuit

**Time range:** 0.5 ... 10 min  
**Repeat accuracy:** < 1 % of setting value

### Input

**Nominal voltage  $U_N$ :** AC 230 V  
**Voltage range:** 0.8 ... 1.1  $U_N$   
**Nominal consumption**  
 apparent power: 4 VA  
 effective power: 1 W  
**Nominal frequency:** 50 / 60 Hz  
**Permitted residual current caused by glow lamps in the push buttons** max. 10 glow lamps à 1 mA

### Output

**Contacts:** 1 NO contact, delay  
**Contact opening gap** < 3 mm  
**Thermal current  $I_{th}$ :** 16 A  
**Switching capacity at lamp load**  
 Glow lamp load: 1200 W at  $T_{ein} / T_{aus} = 1 \text{ s} / 1 \text{ s}$   
**Short circuit strength**  
**max. fuse rating:** 16 A gG / gL IEC/EN 60947-5-1  
**Mechanical life:** >  $10^6$  switching cycles

### General Data

**Nominal operating mode:** Impulse operation  
**Temperature range**  
 Operation: - 20 ... + 60 °C  
 Storage: - 20 ... + 70 °C  
**Altitude:** ≤ 2000 m  
**Clearance and creepage distances**  
 Rated impulse voltage / pollution degree: 4 kV / 2 IEC 60664-1  
**EMC**  
 Electrostatic discharge (ESD): 8 kV (air) IEC/EN 61000-4-2  
 HF-irradiation:  
 80 MHz ... 2.7 GHz: 10 V / m IEC/EN 61000-4-3  
 Fast transients: 2 kV IEC/EN 61000-4-4  
 Surge voltages between  
 wires for power supply: 2 kV IEC/EN 61000-4-5  
 between wire and ground: 4 kV IEC/EN 61000-4-5  
 HF wire guided: 10 V IEC/EN 61000-4-6  
 Interference suppression: Limit value class B EN 55011  
**Degree of protection**  
 Housing: IP 40 IEC/EN 60529  
 Terminals: IP 20 IEC/EN 60529  
**Housing:** Thermoplast with V0-behaviour according to UL subj. 94  
**Vibration resistance** Amplitude 0.35 mm frequency 10 ... 55 Hz IEC/EN 60068-2-6  
 20 / 045 / 04 IEC/EN 60068-1  
**Climate resistance:**  
**Terminal designation:** EN 50005  
**Wire connection:** DIN 46228-1/-2/-3/-4  
 Cross section: 2 x 2.5 mm<sup>2</sup> solid or 2 x 1.5 mm<sup>2</sup> stranded wire with sleeve  
 Insulation of wires or sleeve length: 10 mm  
**Wire fixing:** Flat terminals with self-lifting clamping piece IEC/EN 60999-1  
**Fixing torque:** Max. 0.8 Nm  
**Mounting:** DIN rail IEC/EN 60715  
**Weight:** 75 g

### Dimensions

**Width x Height x Depth:** 17.5 x 90 x 58 mm

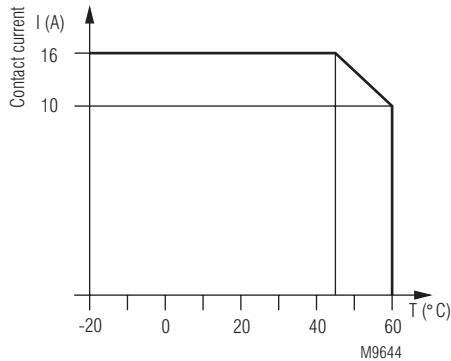
## Standard Type

IK 8810.41/001 AC 230 V 50 / 60 Hz 0.5 ... 10 min  
 Article number: 0056928  
 • Output: 1 NO contact, delay  
 • Nominal voltage  $U_N$ : AC 230 V  
 • Timer range: 0.5 ... 10 min  
 • Width: 17.5 mm

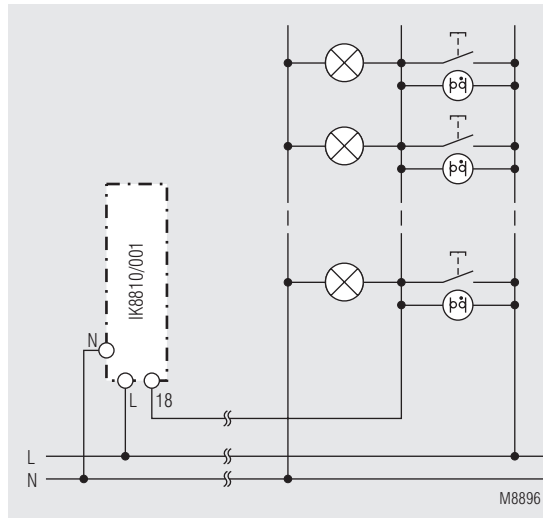
## Ordering Example

IK 8810 .41 /001 AC 230 V 50 / 60 Hz 0.5 ... 10 min  
 Type  
 Contacts  
 Nominal voltage  
 Nominal frequency  
 Time range

## Characteristics



## Application Example



3-wire circuit N on push button