

Series MAX3

Compact Magnetic Absolute Linear Encoder



- Absolute measurement for increased safety (resolution 1 mm)
- Measuring lengths of up to 2450 mm possible
- Insensitive to dust, dirt and water
- Contactless, wear-free measuring principle
- Position detection even in de-energized state
- Only one time definition of the Min and Max position
- No further calibration or referencing required
- Automatic distance detection (LED lights up red if the distance between sensor and magnetic tape is too large)
- Quick and easy installation

MAX3 - Compact Magnetic Absolute Linear Encoder with Distance Detection

General:

MAX3 is a magnetic absolute length measuring system designed for measuring lengths up to 2450 mm.

The sensors and the necessary evaluation electronics are integrated in a compact metal housing, which converts the scanned signals into the desired interface format. By using the supplied adhesive tape, the absolutely coded magnetic tape is glued onto a flat surface. The maximum allowed mounting distance between sensor and magnetic tape is 1.0 mm. Further tolerances can be found on the last page.



Advantages:

A major advantage of the MAX3 is its compact design, which makes it equally suitable for retrofitting as well as new installations in existing machines and vehicles.

Due to the absolute measuring principle, no further referencing is required after the minimum and maximum positions have been defined once.

The absolute Measuring Principle:

The absolute measuring principle ensures maximum safety, as the current position value is always present. Even in the event of a power failure, no data is lost.

The functional Principle:

A Hall sensor line is guided over a coded magnetic tape which is written with an absolute track and always provides the current absolute position. The sensor system scans the code sequence of the north and south poles and determines the absolute value with a resolution of 1 mm. Usable magnetic tapes are the 10 mm wide variant AB20-21-10-1-R-D-10 or the 20 mm wide AB20-21-20-1-R-D-10.

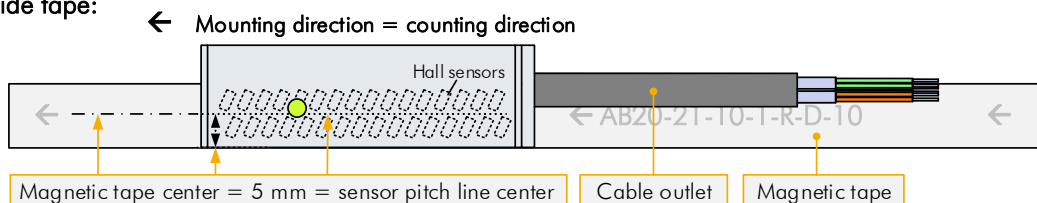


Available Output Interfaces:

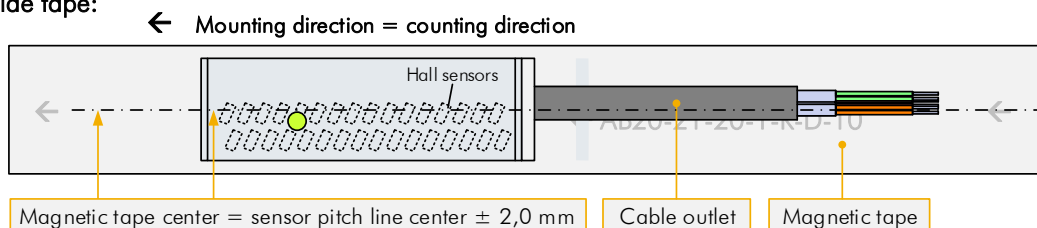
- Interface option I20 → Analog 12 bit output signal (0 ... 20 mA), proportional to the measured value
- Interface option I24 → Analog 12 bit output signal (4 ... 20 mA), proportional to the measured value
- Interface option V04 → Analog 12 bit output signal (0.5 ... 4.5 V), proportional to the measured value
- Interface option V10 → Analog 12 bit output signal (0 ... 10 V), proportional to the measured value
- Interface option CA0 → CANopen standard interface according to DS406 (encoder profile)

Installation / Alignment:

10 mm wide tape:



20 mm wide tape:



Connections (Standard):

Open cable ends:

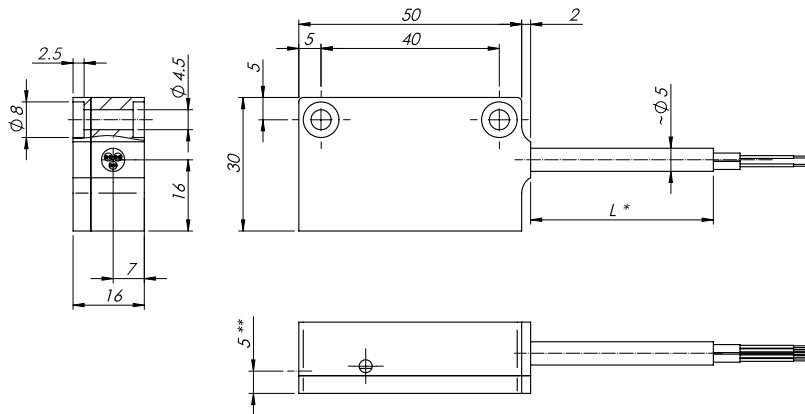
Color	CAN	ANALOG
black	0 V / GND	0 V / GND
brown	+VCC	+VCC
red	-	TEACH 1
orange	-	-
green	CAN HIGH	Analog OUT
yellow	CAN LOW	Analog GND
blank	Screen/shield	-

Connections (Option M12M0):

5-pin M12 round connector:

Pin	CAN	ANALOG
1	Screen/shield	TEACH
2	+VCC	+VCC
3	0 V / GND	0 V / GND
4	CAN HIGH	Analog OUT
5	CAN LOW	Analog GND
Housing	-	Screen/shield

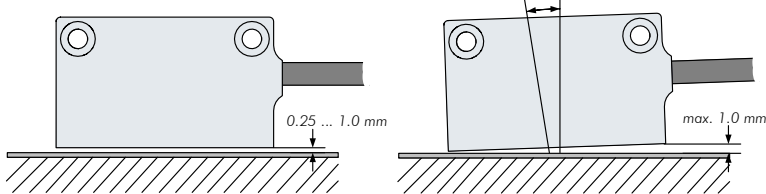
MAX3



*) cable length
 **) sensor pitch line center = center of magnetic tape

Mounting Tolerances:

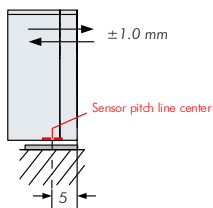
Reading distance:



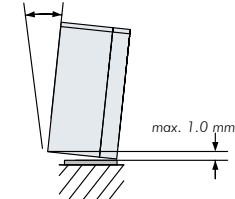
Yaw angle:



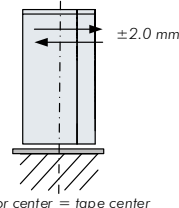
Lateral offset (10 mm tape):



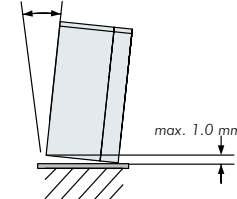
Lateral angle (10 mm tape):



Lateral offset (20 mm tape):



Lateral angle (20 mm tape):



MAX3 Accessories:

Order Designation	Description
AB20-21-10-1-R-D-10	10 mm wide magnetic tape for MAX3 (max. measuring length = 2450 mm). Order length = measuring length + 52 mm (sensor length) + 50 mm (end caps)
AB20-21-20-1-R-D-10	see line above, but 20 mm wide magnetic tape
End cap set 10 mm	2 end caps (10 mm) and 2 x M3 screw; for additional fixation of the magnetic tape, as well as for the protection of the magnetic tape ends.
End cap set 20 mm	see line above, but for 20 mm wide tapes
FS-1000, FS1500 or FS2000	Guide rail, suitable for 10 and 20 mm wide magnetic tape. Available lengths: 1.0 m, 1.5 m and max. 2.0 m. The rails can be lined up for higher measuring lengths.
710000130	PSF 30 x 30 mm pole finder foil for magnetic tapes

Document No.: 799000828

Document Name: MAX3-00-FL-D_33-23

Subject to change - © 2023

ELGO Electronic GmbH & Co. KG

ELGO Electronic GmbH & Co. KG

Measuring | Positioning | Control

Carl - Benz - Str. 1, D-78239 Rielasingen

Fon: +49 (0) 7731 9339-0, Fax: +49 (0) 7731 28803

Internet: www.elgo.de, Mail: info@elgo.de

