

Installation Technique

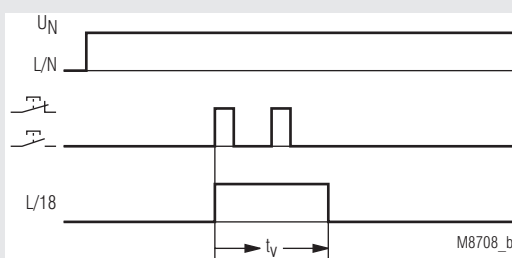
MINITIMER Staircase Lighting Time Switch RK 8810/001

Translation
of the original instructions



- According to EN 60 669-1, EN 60 669-2-1
- Setting range 0.5 ... 10 min.
- For 3-wire circuit N on push button
- Can not be retriggered
- Switch for continuous light on unit
- Contact: 16 A
- Width 17.5 mm

Function Diagram



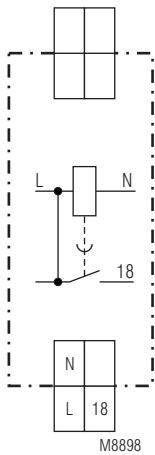
Approvals and Markings



Application

- Staircase lighting time switch
- Timer, release delay

Circuit Diagram



M8898
RK 8810.41/001

Notes

Unit and push button have to be connected to the same phase (see connection diagram) The output contact is not volt free.

Maintenance

Inspection test and maintenance intervals are to be performed annually.

Technical Data

Time Circuit

- Time range:** 0.5 ... 10 min
Repeat accuracy: < 1 % of setting value

Input

- Nominal voltage U_N :** AC 230 V
Voltage range: 0.9 ... 1.1 U_N
Nominal consumption: approx. 5 VA
Nominal frequency: 50 / 60 Hz

- Permitted residual current caused by glow lamps in the push buttons:** depending on load current
Min. pulse duration: 30 ms

Connection Terminals

Terminal designation	Signal description
L, N	Auxiliary voltage AC
L, 18	Button
L, 18	Contact output

Technical Data

Output

Contacts:	1 NO contact, delay not floating	
Contact opening gap:	> 3 mm	
Thermal current I_{th}:	16 A	
Switching capacity with lamp load	Fluorescent lamp load	
Duo switching:	(series compensated) 2 x 20 lamps with 58 W each	
Glow lamp load:	2000 W	
Short circuit current strength:	> 700 A	
Short circuit strength max. fuse rating:	16 A gG / gL	IEC/EN 60947-5-1
Mechanical life:	> 1 x 10 ⁶ switching cycles	

General Data

Nominal operating mode:	Impulse operation / continuous operation	
Temperature range	Operation: - 20 ... + 50°C	
Storage:	- 30 ... + 60°C	
Altitude:	< 2000 m	
Clearance and creepage distances	rated impulse voltage / pollution degree: 4 kV / 2 IEC 60664-1	
EMC	Electrostatic discharge (ESD): 8 kV (air) IEC/EN 61000-4-2	
HF irradiation	80 MHz ... 1 GHz: 10 V / m IEC/EN 61000-4-3	
1 GHz ... 2.7 GHz:	10 V / m IEC/EN 61000-4-3	
Fast transients:	2 kV IEC/EN 61000-4-4	
Surge voltages	between wires for power supply: 1 kV IEC/EN 61000-4-5	
between wire and ground:	2 kV IEC/EN 61000-4-5	
HF wire guided	0.15 ... 80 MHz: 10 V IEC/EN 6 000-4-6	
Interference suppression:	Limit value class B EN 55011	
Degree of protection:	Housing: IP 40 IEC/EN 60529	
Terminals:	IP 20 IEC/EN 60529	
Enclosure:	Thermoplast with V0-behaviour according to UL subj. 94	
Vibration resistance	Amplitude 0,35 mm frequency 10 ... 55 Hz IEC/EN 60068-2-6	
Climate resistance:	20 / 050 / 04 IEC/EN 60068-1	
Terminal designation:	EN 50 005	
Wire connection:	DIN 46228-1/-2/-3/-4	
Fixed screw terminals	Cross section: 0.5 ... 10 mm ² (AWG 20 - 8) solid or 0.5 ... 6 mm ² (AWG 20 - 10) stranded wire with and without ferrules	
Stripping length:	10 mm	
Fixing torque:	0.8 Nm EN 60999-1	
Wire fixing:	Cross-head screw / M3.5 box terminals	
Mounting:	DIN rail IEC/EN 60715	
Weight:	Approx. 80 g	

Dimensions

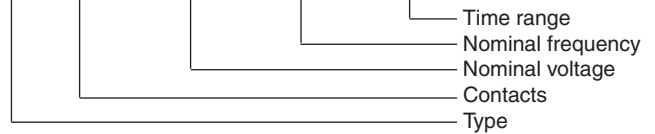
Width x Height x Depth: 17.5 x 90 x 66 mm

Standard Type

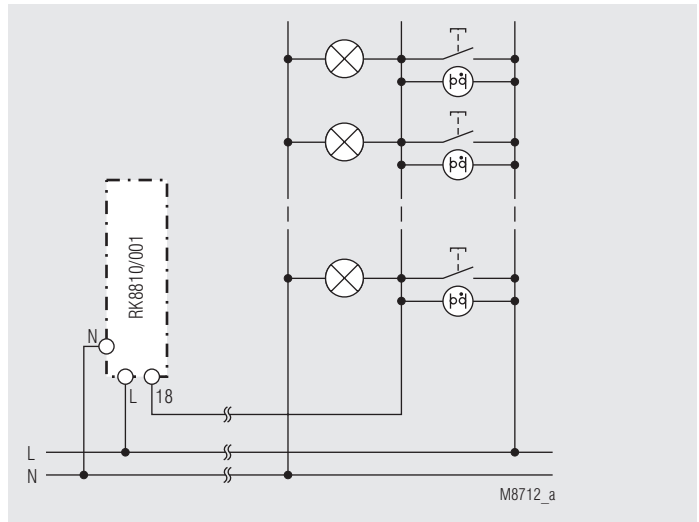
RK 8810.41/001	AC 230 V	50 / 60 Hz	0.5 ... 10 min
Article number:	0058992		
• Output:	1 NO contact, delay		
• Nominal voltage U_N :	AC 230 V		
• Timer range:	0.5 ... 10 min		
• Width:	17.5 mm		

Ordering Example

RK 8810 .41 /001 AC 230 V 50 / 60 Hz 0.5 ... 10 min



Application Example



3-wire circuit N on push button