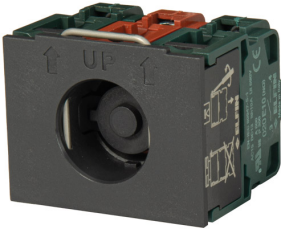


# Datasheet

020G3E21

Flanked contact blocks 2 N.O.+1 N.C., with flange



## Features

|                |   |
|----------------|---|
| Range          | Contact blocks Ø 22                               |
| components     | 2 N.O. + 1 N.C. with 3-pole flange                |
| Code           | 020G3E21  |
| Description    | Flanked contact blocks 2 N.O.+1 N.C., with flange |
| Colour         | Rosso-Verde                                       |
| Weight - gr    | 45.0  |
| Customs Tariff | 85365080  |
| GTIN           | 8052878071066                                     |

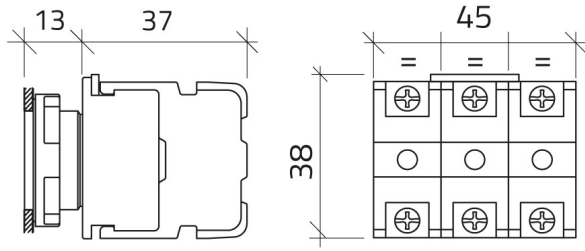
## Datasheet

|                                   |   |
|-----------------------------------|---|
| Approvals                         | CE  |
| Compliance with standards         | IEC-EN60947-1, IEC-EN60947-5-1, UL508, CSA C22-2                    |
| Compliance with standards         | UNI CEI EN 45545-2, CEI EN 61373                                    |
| Operating temperatures            | -40° ÷ +70°C  |
| Protection degree                 | IP20 (IEC-EN60529)  |
| Mechanical durability             | 5.000.000 Operations  |
| Shock resistance                  | 30g duration=18ms (EN-IEC 60068-2-27)                               |
| Shock resistance                  | 50g duration=11ms (EN-IEC 60068-2-27)                               |
| Vibration resistance              | 5g f= 2...500Hz (EN-IEC 60068-2-6)                                  |
| Pollution degree for installation | 3   |
| Housing material                  | PA Polyamide  |
| Flange clamping spring material   | Stainless steel AISI 304  |
| Terminal screw                    | Tightening torque 0.8÷1 Nm (IEC-EN60947-1)                          |
| Terminal screw head shape         | Combined:cross Phillips2 or slotted flat D.5mm max                  |
| Terminal screw material           | Zinc plated steel   |
| Terminal screw connections        | min 1x0.5mm <sup>2</sup> (20AWG) - max 2x2.5mm <sup>2</sup> (14AWG) |
| Cable lugs                        | Fork type "spring spade" for screw M3.5 / W=6.4mm                   |
| Contact material                  | Ag 1000/1000  |
| Contact movement                  | Slow action contact   |
| Contacts                          | Self cleaning by pads creeping                                      |
| NC contact operating travel       | 1.0mm NC change the state - 5mm total                               |

|  |  |
|--|--|
| <b>NO contact operating travel</b>             | 3.6mm NO change the state - 5mm total              |
| <b>NC contacts</b>                             | Minimum positive opening travel: 1mm               |
| <b>NC contacts (all versions)</b>              | Minimum force for positive opening: 1.5N           |
| <b>NC contacts (all versions)</b>              | Total travel including overtravel: 5mm             |
| <b>Operating force (all version)</b>           | 2N   |
| <b>Rated insulation voltage</b>                | Ui 690V - Uimp 4KV (IEC-EN60947-1)                 |
| <b>Rated thermal current</b>                   | Ith 10A (IEC-EN60947-1)                            |
| <b>Rated conditional short-circuit current</b> | 1000A (IEC-EN60947-1)                              |
| <b>Short-circuit protective device</b>         | 10A cartridge fuse gG 10x38mm (IEC-EN60947-5-1)    |
| <b>Electrical ratings</b>                      | AC15-DC13 (IEC-EN60947-5-1) - A600-P300 (UL 508)   |
| <b>Electrical reliability</b>                  | <10exp(-8)5mA in clean environment IEC-EN60947-5-4 |
| <b>AC Performances</b>                         | AC 24V-10A, 120V-6A, 240V-3A, 600V-1.2A            |
| <b>DC Performances</b>                         | DC 24V-5A, 120V-1.1A, 240V-0.55A                   |
| <b>Use restrictions</b>                        | Suitable for pushbutton only                       |
| <b>Warranty period</b>                         | 18 months  |

# Technical drawings

020



032

