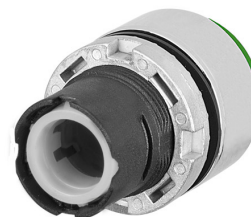


Datasheet

020PPTASLVW

Projecting push-button, illuminated, maintained, green



Features

Range	Illuminated push-buttons Ø 22 - metal bezel
components	Projecting
Code	020PPTASLVW
Description	Projecting push-button, illuminated, maintained, green
Colour	Verde
Weight - gr	33.0
Customs Tariff	85365080
GTIN	8052878008215

Datasheet

Approvals	CE
Compliance with standards	IEC-EN60947-1, IEC-EN60947-5-1, UL508, CSA C22-2
Compliance with standards	UNI CEI EN 45545-2
Operating temperatures	-25° ÷ +65°C
Environmental operating values	+25°C-97%RH / +45°C-93%RH (IEC-EN60068-2-30)
Protection degree	IP65 (IEC-EN60529)
Protection against impact	IK03 (IEC-EN62262)
Mechanical durability	3.000.000 Operations
Shock resistance	50g duration=11ms (EN-IEC 60068-2-27)
Vibration resistance	5g f= 2...500Hz (EN-IEC 60068-2-6)
Contact blocks configuration	Max no. 6 blocks (3+3)
Button/mushroom material (illuminated type)	PC Polycarbonate
External bezel material	Chromed zinc alloy
Locking ring material	Zamak zinc alloy
Fixing diameter	22.5mm - Thickness 1÷6mm
Tightening torque	2 ÷ 3Nm (17.7 ÷ 26.6 Lb-in)
Actuation type	Push-Push (maintained position)
Protection against electric shock	Class II (IEC-EN61140)
Warranty period	18 months

Technical drawings

