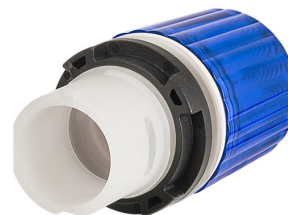


Datasheet

020ULABL

Modular pilot light H 30, blue



Features

Range	Pilot lights Ø 22
components	Modular H 30
Code	020ULABL
Description	Modular pilot light H 30, blue
Colour	Blu
Weight - gr	13.0
Customs Tariff	85365080
GTIN	8052878027285

Datasheet

Approvals	CE, UL, CSA
Compliance with standards	IEC-EN60947-1, IEC-EN60947-5-1, UL508, CSA C22-2
Compliance with standards	UNI CEI EN 45545-2, CEI EN 61373
Operating temperatures	-40° ÷ +70°C
Environmental operating values	+25°C-97%RH / +45°C-93%RH (IEC-EN60068-2-30)
Protection degree	IP66 - IP69 (IEC-EN60529)
Protection against impact	IK03 (IEC-EN62262)
Shock resistance	30g duration=18ms (EN-IEC 60068-2-27)
Shock resistance	50g duration=11ms (EN-IEC 60068-2-27)
Vibration resistance	5g f= 2...500Hz (EN-IEC 60068-2-6)
Material	PA Polyamide
Lens material	PC Polycarbonate
Locking ring material	PA Polyamide
Fixing diameter	22.5mm - Thickness 1÷6mm
Tightening torque	1 ÷ 2,5Nm (8.8÷22.1 Lb-in)
Modular pilot light	Must be completed with bulb holder-power supply
Protection against electric shock	Class II (IEC-EN61140)
Warranty period	18 months

Technical drawings

