

Datasheet

030SFMLOBC

Knob selector switch, illuminated, white, flush-mount, 3-position, Cam O, return to Centre



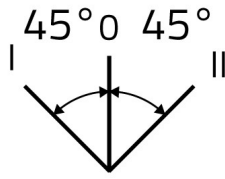
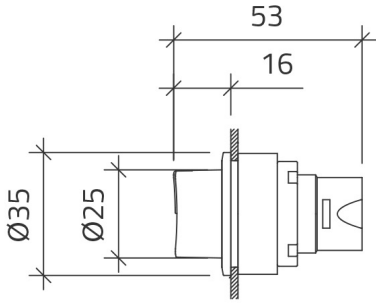
Features

| | |
|-----------------------|--|
| Range | Illuminated knob selector switches Ø 30 |
| components | 3-position |
| Code | 030SFMLOBC |
| Description | Knob selector switch, illuminated, white, flush-mount, 3-position, Cam O, return to Centre |
| Colour | Bianco |
| Weight - gr | 43.5 |
| Customs Tariff | 85365080 |
| GTIN | 8052878037048 |

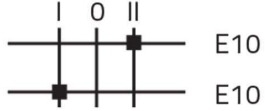
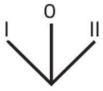
Datasheet

| | |
|---|---|
| Approvals | CE, UL, CSA |
| Compliance with standards | IEC-EN60947-1, IEC-EN60947-5-1, UL508, CSA C22-2 |
| Compliance with standards | UNI CEI EN 45545-2, CEI EN 61373 |
| Operating temperatures | -25° ÷ +65°C |
| Environmental operating values | +25°C-97%RH / +45°C-93%RH (IEC-EN60068-2-30) |
| Protection degree | IP65 (IEC-EN60529) |
| Protection against impact | IK04 (IEC-EN62262) |
| Mechanical durability | 1.000.000 Operations |
| Shock resistance | 30g duration=18ms (EN-IEC 60068-2-27) |
| Shock resistance | 50g duration=11ms (EN-IEC 60068-2-27) |
| Vibration resistance | 5g f= 2...500Hz (EN-IEC 60068-2-6) |
| Contact blocks configuration | Max no. 4 blocks (2+2) |
| Knob or lever material | PC Polycarbonate |
| External bezel material | Anodized aluminum |
| Locking ring material | Zamak zinc alloy |
| Fixing diameter | 30.5mm - Thickness 1÷6mm |
| Tightening torque | 2 ÷ 3Nm (17.7 ÷ 26.6 Lb-in) |
| Illuminated selector switch (all versions) | It is mandatory to use LED bulbs type 010BA9SLxxx |
| Protection against electric shock | Class I (IEC-EN61140) |
| Warranty period | 18 months |

Technical drawings



CAM O

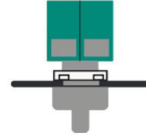


E10

E10

23 — 24

13 — 14



020E10
020E10
020PD9

