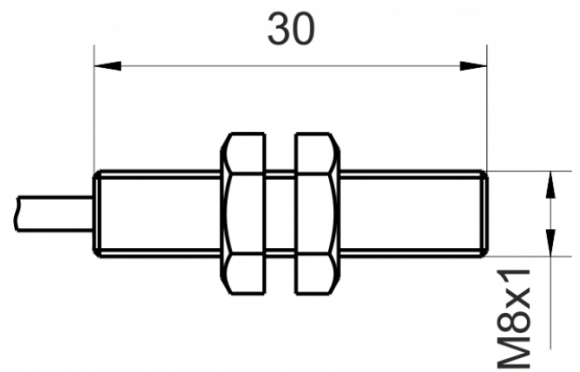
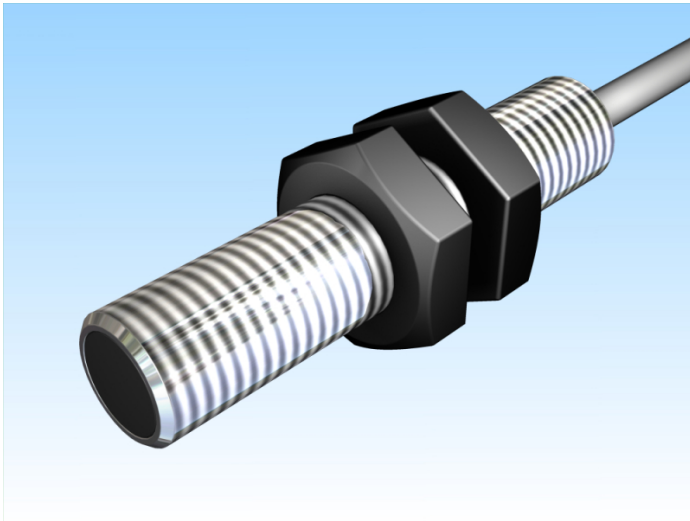


[Article Page](#)


Product Description

inductive sensor NAMUR




Name
Order number
Matchcode
Switching distance
Mounting

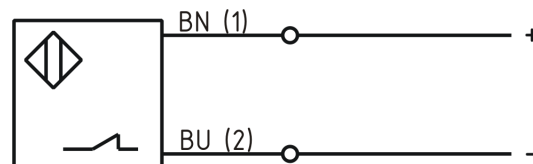
KJ1-M8MB30-NA-X0303
08317320110
9932-0110
1 mm

 shielded
Namur

Signal Type
Connection

 Cable

Connection diagramm



fine-pitch thread M8 x 30

Dimension (in mm)
Technical Specification
Special features
Operating voltage
Max. ripple
No load current
Switching frequency
Operating temperature
Temperature drift
Repeat accuracy
Time delay
Short-circuit proof
Overload protection
Reverse voltage protection
Protection category
EMC-level
Housing material
Material active face
Cable length
Utilisation category
Cable material
Nominal operating voltage
Cable cross

PUR Connecting cable
6 - 12 VDC
≤ 5 %
ca. 3,5 mA
2000 Hz
-25 ° C to 60 ° C
≤ 10 %
≤ 10 %
50 ms
yes
yes
yes
IP67
DIN EN 60947-5-6:2000-12
Brass, nickel plated
PCB
2 m
DC 13
PUR LIFY11Y schwarz
8,2 V DC
2x0.14 mm²



KJ1-M8MB30-NA-X0303

Pulsotronic GmbH & Co. KG Neue Schichtstraße 14b 09366 Niederdorf Deutschland +49 (0)37296 930-200

Load current ON

ca. 0,5 mA

Load Current OFF

ca. 3,5 mA

FIT / MTTF acc. to SIEMENS 29500

17,88 / 6385y

Errors and omissions excepted