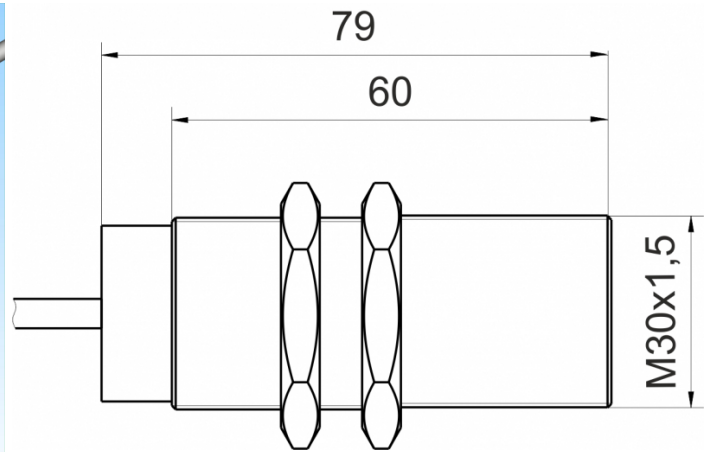
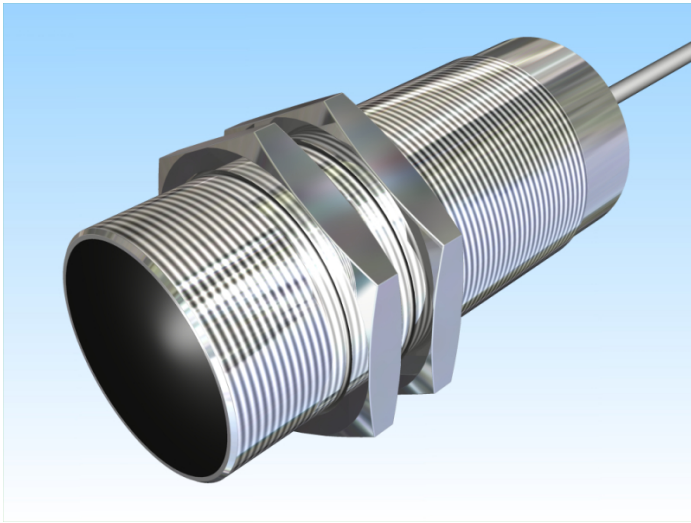


[Article Page](#)

Product Description

inductive sensor high temperature



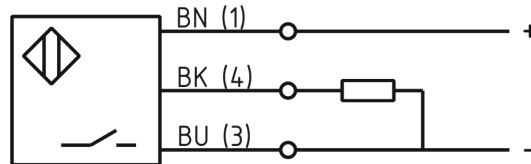
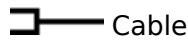
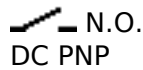
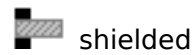
Name
Order number
Switching distance
Mounting

Switch type

Signal Type
Connection

Connection diagramm

KJ10-M30EB70-DPS-HT180-X0202
08310002505
10 mm



fine-pitch thread M30 x 70

Dimension (in mm)
Technical Specification
Special features

high temperature sensor up to 180°C
Connecting Cable Silicone

Operating voltage
Max. ripple
Voltage drop
Max. load current
No load current
Leakage current
Switching frequency
Switching hysteresis
Operating temperature
Temperature drift
Repeat accuracy
Time delay
Short-circuit proof
Reverse voltage protection
Protection category
EMC-level
Housing material
Material active face

10 - 35 V DC
≤ 10 %
2 V
150 mA
≤ 15 mA
≤ 250 µA
200 Hz
≤ 15 %
-25 ° C to 180 ° C
+/- 15 %
≤ 3 %
2,5 ms
yes
yes
IP65
DIN EN 60947-5-2: 2008
Stainless steel V2A
VECTRA



KJ10-M30EB70-DPS-HT180-X0202

Pulsotronic GmbH & Co. KG Neue Schichtstraße 14b 09366 Niederdorf Deutschland +49 (0)37296 930-200

Cable length	2 m
Utilisation category	DC 13
Cable material	Silikon Si-HF grau
Conductor diameter	1,5 mm mm mm
Nominal operating voltage	24 V DC
Cable cross	3x0.25 mm ²
MTTF acc. to SIEMENS 29500	185y

Errors and omissions exceptet