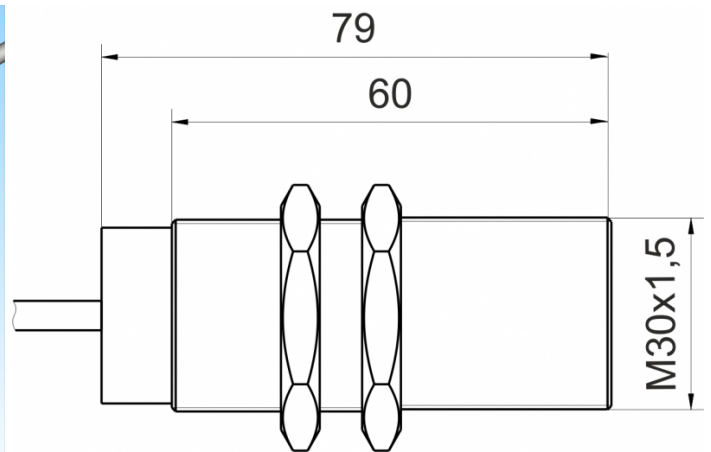
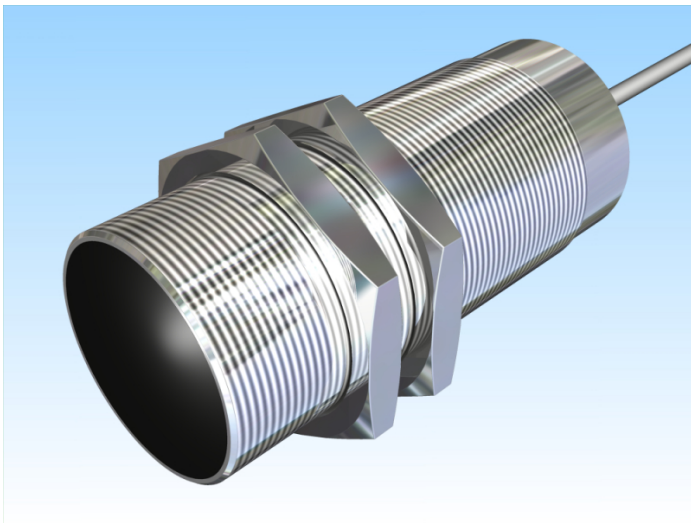


[Article Page](#)


Product Description

inductive sensor high temperature




Name  
Order number  
Switching distance  
Mounting

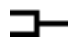
KJ10-M30EB70-DPS-HT180-X0240  
08310001728  
10 mm

 shielded

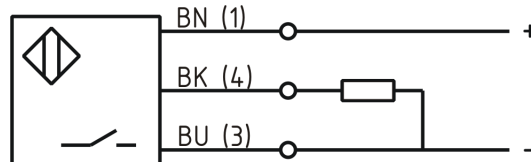
Switch type

 N.O.  
DC PNP

Signal Type  
Connection

 Cable

Connection diagramm



Dimension (in mm)  
Technical Specification  
Special features

fine-pitch thread M30 x 70

Operating voltage  
Max. ripple  
Voltage drop  
Max. load current  
No load current  
Leakage current  
Switching frequency  
Switching hysteresis  
Operating temperature  
Temperature drift  
Time delay  
Short-circuit proof  
Reverse voltage protection  
Protection category  
EMC-level  
Housing material  
Material active face  
Cable length

high temperature sensor up to 180°C  
Connecting Cable PTFE  
10 - 35 V DC  
≤ 10 %  
2 V  
150 mA  
≤ 15 mA  
≤ 250 µA  
200 Hz  
≤ 15 %  
-25 ° C to 180 ° C  
+/- 15 %  
2,5 ms  
yes  
yes  
IP65  
DIN EN 60947-5-2: 2008  
Stainless steel V2A  
VECTRA  
2 m



## KJ10-M30EB70-DPS-HT180-X0240

Pulsotronic GmbH & Co. KG Neue Schichtstraße 14b 09366 Niederdorf Deutschland +49 (0)37296 930-200

Utilisation category	DC 13
Cable material	PTFE
Conductor diameter	1,2 mm mm mm
Nominal operating voltage	24 V DC
Cable cross	3x0,25 mm <sup>2</sup>
MTTF acc. to SIEMENS 29500	185y

**Errors and omissions exceptet**