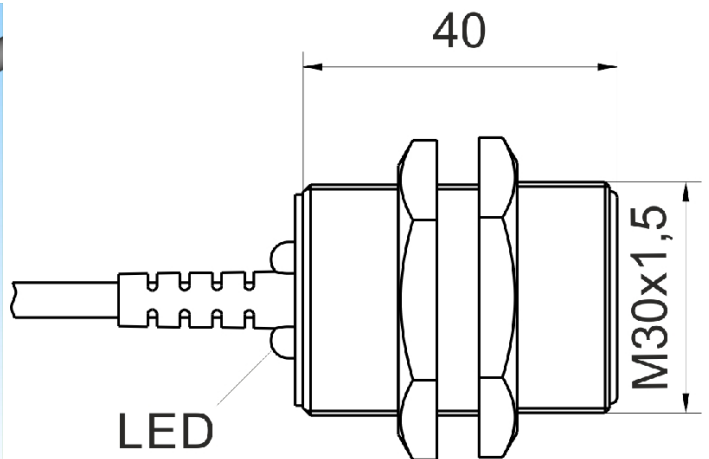
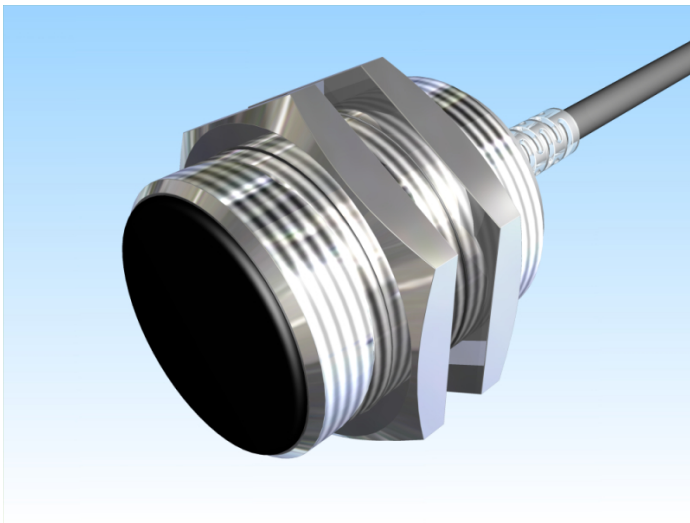


[Article Page](#)

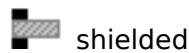
Product Description

inductive sensor temperature immune

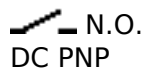


Name
Order number
Matchcode
Switching distance
Mounting

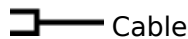
KJ10-M30MB40-DPS-T
08317666010
9966-6010
10 mm



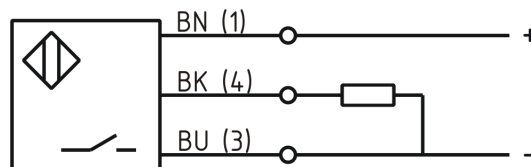
Switch type



Signal Type
Connection



Connection diagramm



fine-pitch thread M30 x 40

Dimension (in mm)
Technical Specification
Special features
Operating voltage
Max. ripple
Voltage drop
Max. load current
No load current
Leakage current
Switching frequency
Switching hysteresis
Operating temperature
Temperature drift
Repeat accuracy
Switching state
Time delay
Short-circuit proof
Overload protection
Reverse voltage protection
Protection category
EMC-level

temperature resistant up to 100°C
10 - 30 V DC
≤ 10 %
2,4 V
200 mA
≤ 10 mA
≤ 10 µA
500 Hz
≤ 15 %
-40 ° C to 100 ° C
≤ 10 %
≤ 10 %
LED
300 ms
yes
yes
yes
IP67
DIN EN 60947-5-2:2008

Housing material	Brass, nickel plated
Material active face	PCB
Cable length	2 m
Utilisation category	DC 13
Cable material	PUR LIFY11Y schwarz
Nominal operating voltage	24 V DC
Cable cross	3x0.34 mm ²
FIT / MTTF acc. to SIEMENS 29500	50,73 / 2250y

Errors and omissions exceptet