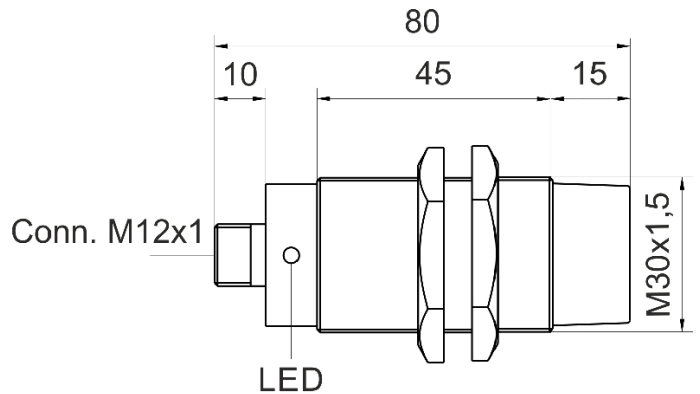
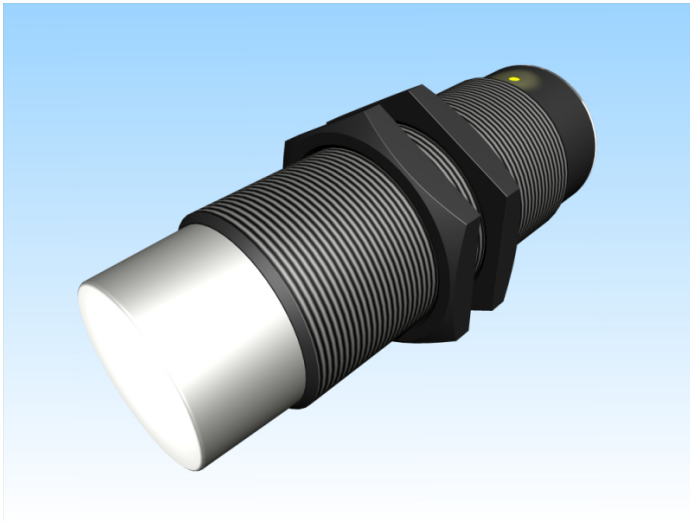


[Article Page](#)

Product Description

inductive sensor weld immune




Name
Order number
Matchcode
Switching distance
Mounting

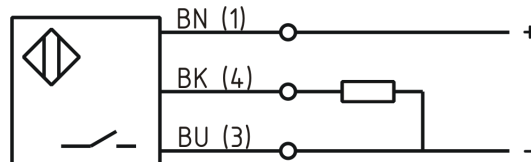
KJ15-M30MN80-DPS-V2-SF
08317665965
9966-5965
15 mm

 non shielded

Switch type

 N.O.
DC PNP
connector M12

Signal Type
Connection
Connection diagramm



Dimension (in mm)
Technical Specification
Special features

fine-pitch thread M30 x 80

resistant against welding current up to 20 kA in a distance of 25mm to wires
proofed against alternating magnetic fields up to 150 mT

Operating voltage
Max. ripple
Voltage drop
Max. load current
No load current
Leakage current
Switching frequency
Switching hysteresis
Operating temperature
Temperature drift
Repeat accuracy
Switching state
Time delay
Short-circuit proof
Overload protection
Reverse voltage protection

10 - 30 V DC
≤ 10 %
2,4 V
200 mA
≤ 10 mA
≤ 10 μA
15 Hz
≤ 15 %
-25 ° C to 70 ° C
≤ 10 %
≤ 10 %
LED
500 ms
yes
yes
yes



KJ15-M30MN80-DPS-V2-SF

Pulsotronic GmbH & Co. KG Neue Schichtstraße 14b 09366 Niederdorf Deutschland +49 (0)37296 930-200

Protection category	IP67
EMC-level	DIN EN 60947-5-2:2008
Housing material	Brass, nickel plated
Material active face	PCB
Utilisation category	DC 13
Nominal operating voltage	24 V DC
Termination	Connector M12 4pin
FIT / MTTF acc. to SIEMENS 29500	145,00 / 787y

Errors and omissions exceptet