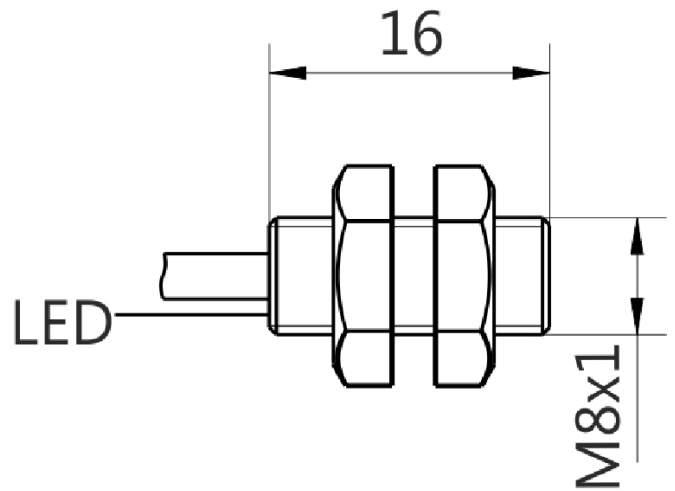
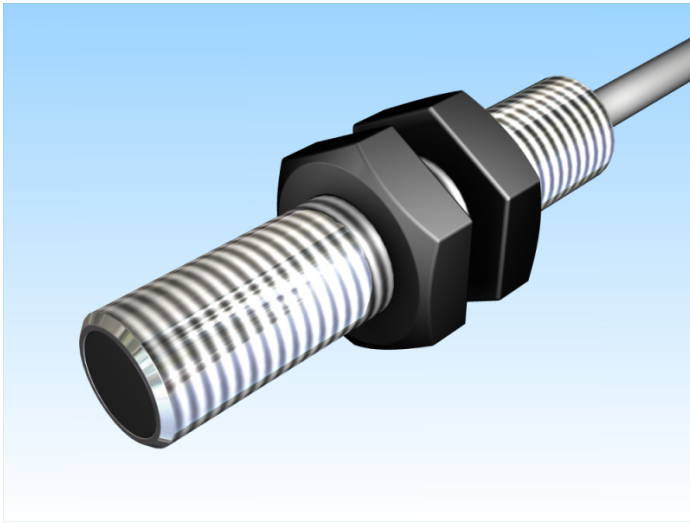


[Article Page](#)

Product Description

inductive sensor DC



Name
Order number
Switching distance
Mounting


Switch type

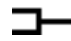
Signal Type
Connection

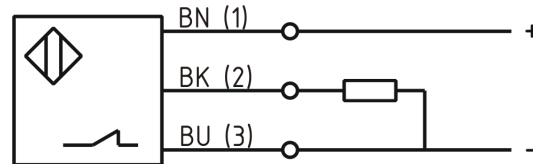
Connection diagramm

KJ1,5-M8EB16-DPÖ
08313080152
1,5 mm

 shielded

 N.O.
DC PNP

 Cable



fine-pitch thread M8x1 x 16

Dimension (in mm)
Technical Specification
Operating voltage
Max. ripple
Voltage drop
Max. load current
No load current
Leakage current
Switching frequency
Switching hysteresis
Operating temperature
Temperature drift
Repeat accuracy
Switching state
Short-circuit proof
Overload protection
Reverse voltage protection
Protection category
EMC-level
Housing material
Material active face
Cable length

10 - 30 VDC
≤ 10 %
2,4 V
200 mA
≤ 10 mA
≤ 10 µA
2000
≤ 15 %
-25 ° C to 70 ° C
≤ 10 %
≤ 5 %

LED
yes
yes
yes
IP67
DIN EN 60947-5-2:2008
Stainless steel V2A
PBT
2 m



KJ1,5-M8EB16-DPÖ

Pulsotronic GmbH & Co. KG Neue Schichtstraße 14b 09366 Niederdorf Deutschland +49 (0)37296 930-200

Utilisation category	DC 13
Cable material	PVC
Cable cross	3x0,14 mm ²
Termination	2m PVC 3x0,14mm ²

Errors and omissions exceptet