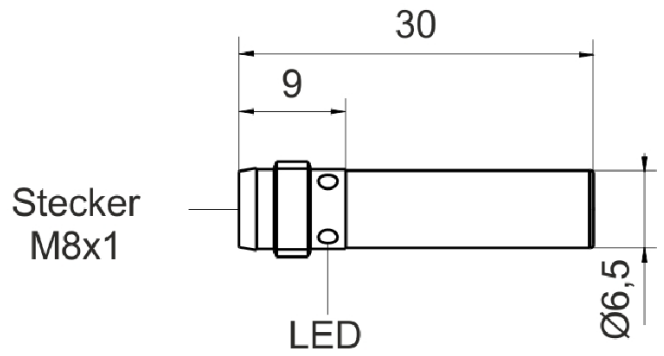
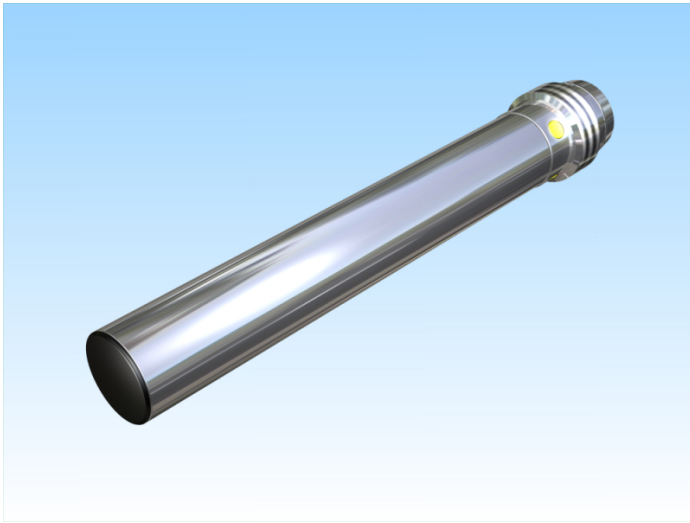


[Article Page](#)

Product Description

inductive sensor DC



Name
Order number
Switching distance
Mounting

KJ2-G6,5EB30-DNS-V1
08313650231
2 mm

shielded

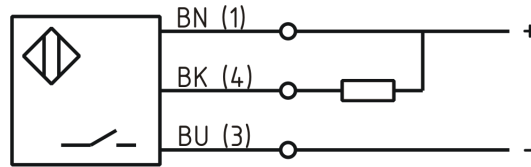
Switch type

N.O.
DC NPN

Signal Type
Connection

Connector

Connection diagramm



6,5 x x 30

Dimension (in mm)
Technical Specification
Operating voltage
Max. ripple
Voltage drop
Max. load current
No load current
Leakage current
Switching frequency
Switching hysteresis
Operating temperature
Temperature drift
Repeat accuracy
Switching state
Short-circuit proof
Overload protection
Reverse voltage protection
Protection category
EMC-level
Housing material
Material active face
Termination

10 - 30 VDC
≤ 10 %
2,4 V
200 mA
≤ 10 mA
≤ 10 µA
2000 Hz
15 %
-25 ° C to 70 ° C
10 %
5 %
LED
yes
yes
yes
IP67
DIN EN 60947-5-2:2008
Stainless steel V2A
PBT
Connector M8 3pol



KJ2-G6,5EB30-DNS-V1

Pulsotronic GmbH & Co. KG Neue Schichtstraße 14b 09366 Niederdorf Deutschland +49 (0)37296 930-200

Errors and omissions exceptet