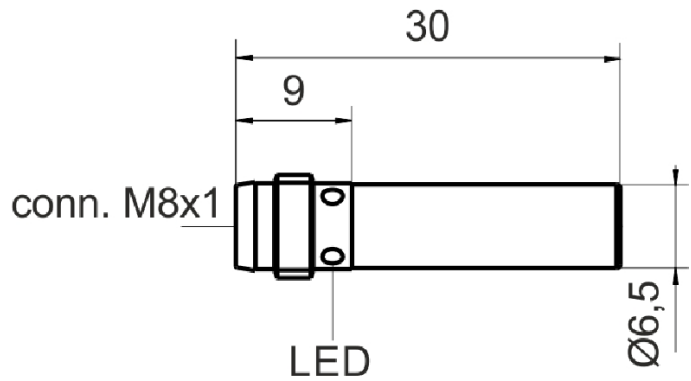
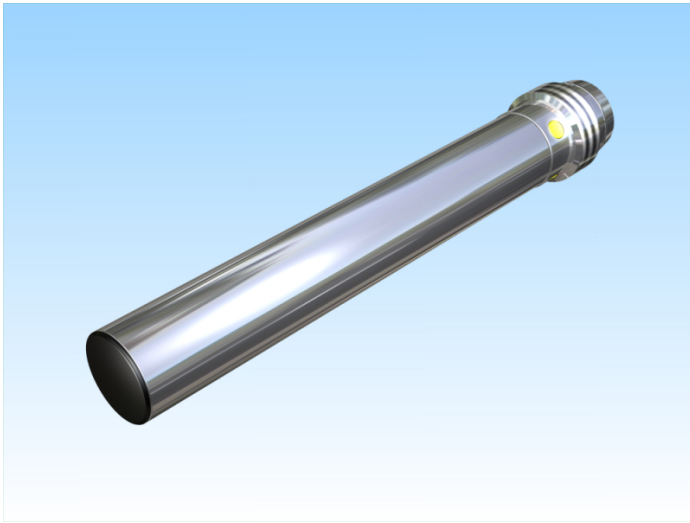


[Article Page](#)

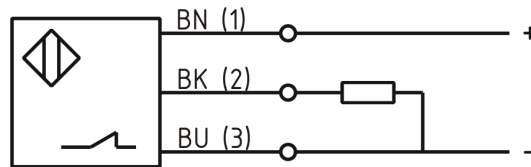
Product Description

inductive sensor DC



Name  
Order number  
Switching distance  
Mounting  
  
Switch type  
  
Signal Type  
Connection  
Connection diagramm

KJ2-G6,5EB30-DPÖ-V1  
08313650221  
2 mm



D 6,5 x 30

Dimension (in mm)  
Technical Specification  
Operating voltage  
Max. ripple  
Voltage drop  
Max. load current  
No load current  
Leakage current  
Switching frequency  
Switching hysteresis  
Operating temperature  
Temperature drift  
Switching state  
Short-circuit proof  
Overload protection  
Reverse voltage protection  
EMC-level  
Housing material  
Utilisation category  
Termination

10 - 30 VDC  
≤ 10 %  
2,4 V  
200 mA  
≤ 10 mA  
≤ 10 µA  
2000 Hz  
15 %  
-25 ° C to 70 ° C  
10 %  
LED  
yes  
yes  
yes  
DIN EN 60947-5-2: 2008  
Stainless steel V2A  
DC 13  
Connector M8 3pin

**Errors and omissions exceptet**