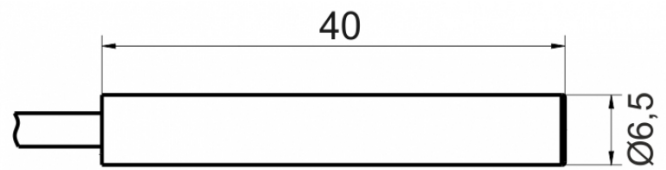
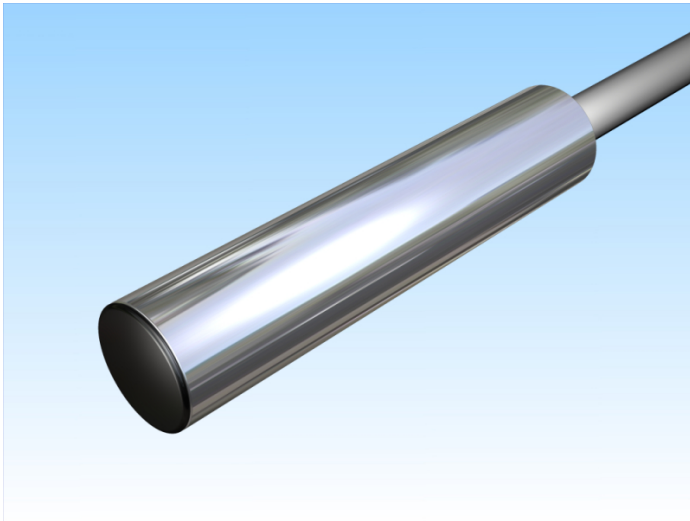


[Article Page](#)


Product Description

inductive sensor analogue




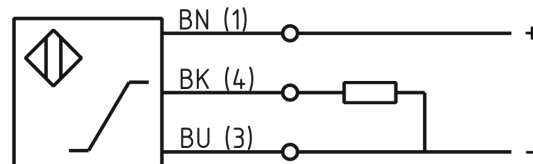
Name  
Order number  
Switching distance  
Mounting  
  
Switch type  
  
Signal Type  
Connection  
  
Connection diagramm

KJ2-G6,5MB40-ANU  
08317140050  
from 0,5 mm to 2 mm

 shielded

 analog  
Analog Voltage

 Cable



D 6.5 x 40

Dimension (in mm)  
Technical Specification  
Special features  
Operating voltage  
Max. ripple  
No load current  
Switching frequency  
Operating temperature  
Temperature drift  
Repeat accuracy  
Linearity  
Pulse rate of rise  
Protection category  
EMC-level  
Housing material  
Material active face  
Cable length  
Utilisation category  
Cable material  
Nominal operating voltage  
Cable cross  
FIT / MTTF acc. to SIEMENS 29500

Output Voltage 0 ... 10 V  
11 - 35 VDC  
≤ 5 %  
≤ 10 mA  
400 Hz  
-25 ° C to 70 ° C  
+/- 8 %  
≤ 1 %  
≤ 3 %  
6,66 V/m +/- 5%  
IP67  
DIN EN 60947-5-7: 2004-06  
Brass, nickel plated  
ULTRAMID B3ZG3  
2 m  
DC 13  
PVC LIYY grau (grey)  
24 V DC  
3x0.14 mm<sup>2</sup>  
87,12 / 1310y



## **KJ2-G6,5MB40-ANU**

Pulsotronic GmbH & Co. KG Neue Schichtstraße 14b 09366 Niederdorf Deutschland +49 (0)37296 930-200

**Errors and omissions exceptet**