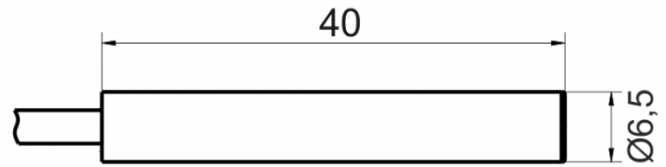
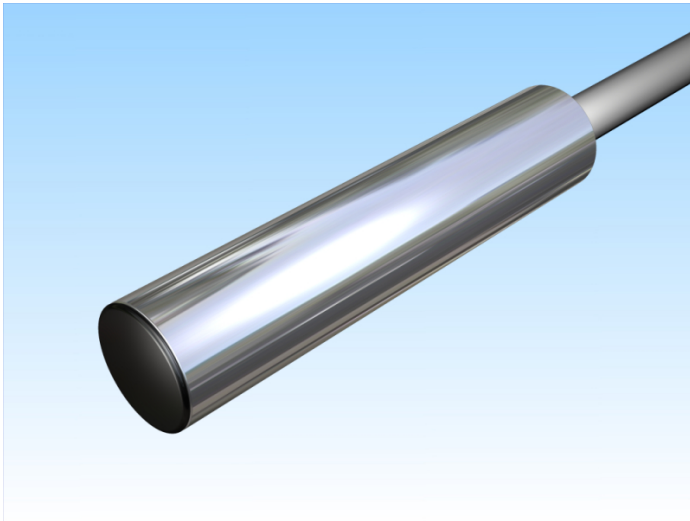


[Article Page](#)

Product Description

inductive sensor analogue




Name
Order number
Switching distance
Mounting

Switch type


Signal Type
Connection

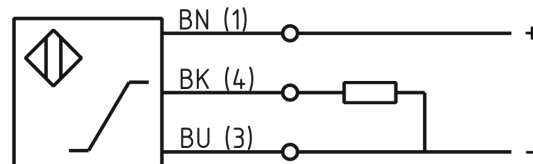
Connection diagramm

KJ2-G6,5MB40-ANU
08317140050
from 0,5 mm to 2 mm

 shielded

 analog
Analog Voltage

 Cable



D 6.5 x 40

Dimension (in mm)
Technical Specification
Special features
Operating voltage
Max. ripple
No load current
Switching frequency
Operating temperature
Temperature drift
Repeat accuracy
Linearity
Pulse rate of rise
Protection category
EMC-level
Housing material
Material active face
Cable length
Utilisation category
Cable material
Nominal operating voltage
Cable cross
FIT / MTTF acc. to SIEMENS 29500

Output Voltage 0 ... 10 V
11 - 35 VDC
≤ 5 %
≤ 10 mA
400 Hz
-25 ° C to 70 ° C
+/- 8 %
≤ 1 %
≤ 3 %
6,66 V/m +/- 5%
IP67
DIN EN 60947-5-7: 2004-06
Brass, nickel plated
ULTRAMID B3ZG3
2 m
DC 13
PVC LIYY grau (grey)
24 V DC
3x0.14 mm²
87,12 / 1310y

Errors and omissions exceptet