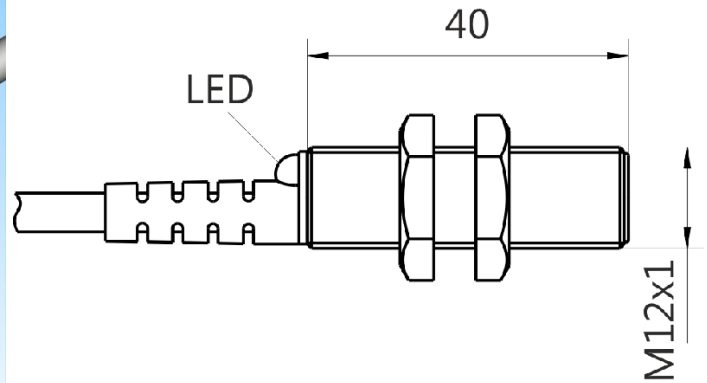
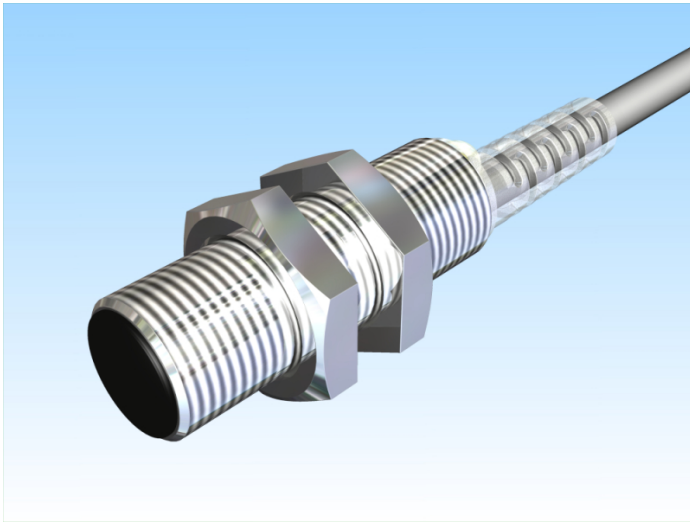


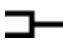


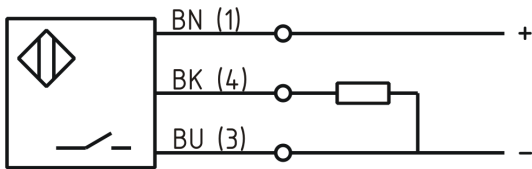
[Article Page](#)

Product Description

inductive sensor temperature immune



Name	KJ2-M12MB40-DPS-T-X0309
Order number	08317626012
Matchcode	9962-6012
Switching distance	2 mm
Mounting	 shielded
Switch type	 N.O. DC PNP
Signal Type	
Connection	 Cable
Connection diagramm	



Dimension (in mm) fine-pitch thread M12 x 40

Technical Specification

Special features temperature resistant up to 100°C

Operating voltage 10 - 30 V DC

Max. ripple ≤ 10 %

Voltage drop 2,4 V

Max. load current 200 mA

No load current ≤ 10 mA

Leakage current ≤ 10 µA

Switching frequency 1000

Switching hysteresis ≤ 15 %

Operating temperature -40 ° C to 100 ° C

Temperature drift ≤ 10 %

Repeat accuracy ≤ 10 %

Switching state LED

Time delay 300 ms

Short-circuit proof yes

Overload protection yes

Reverse voltage protection yes

Protection category IP67

EMC-level DIN EN 60947-5-2:2008

Housing material	Brass, nickel plated
Material active face	PCB
Cable length	5 m
Utilisation category	DC 13
Cable material	PUR LIFY11Y schwarz
Nominal operating voltage	24 V DC
Cable cross	3x0.34 mm ²
FIT / MTTF acc. to SIEMENS 29500	73,86 / 1546y

Errors and omissions exceptet