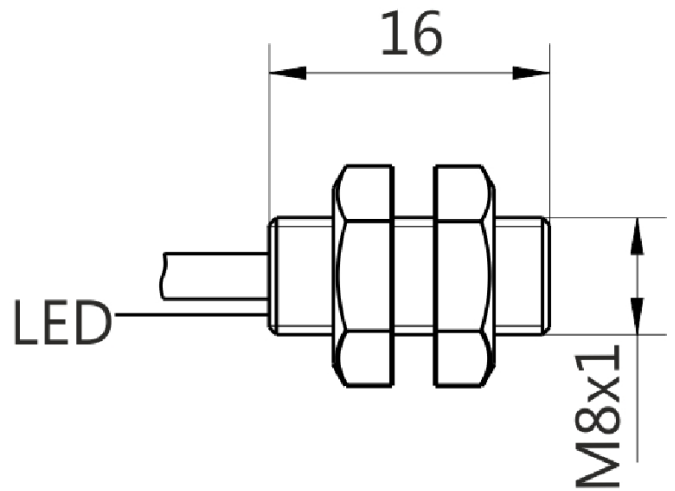
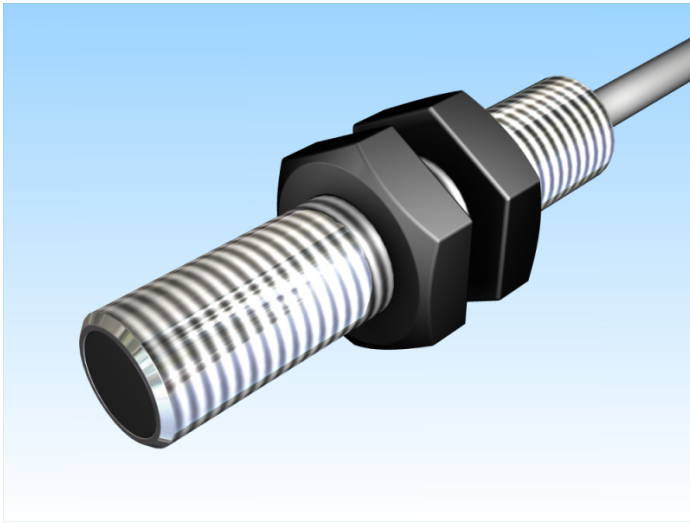


[Article Page](#)

Product Description

inductive sensor DC




Name
Order number
Switching distance
Mounting


Switch type


Signal Type
Connection

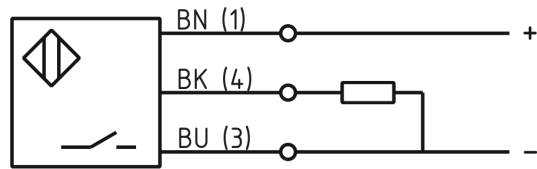
Connection diagramm

KJ2-M8EB16-DPS
08313080210
2 mm

 shielded

 N.O.
DC PNP

 Cable



fine-pitch thread M8x1 x 16

Dimension (in mm)
Technical Specification
Operating voltage
Max. ripple
Voltage drop
Max. load current
No load current
Leakage current
Switching frequency
Switching hysteresis
Operating temperature
Temperature drift
Repeat accuracy
Switching state
Short-circuit proof
Overload protection
Reverse voltage protection
Protection category
EMC-level
Housing material
Material active face
Cable length

10 - 30 VDC
 $\leq 10 \%$
 2,4 V
 200 mA
 $\leq 10 \text{ mA}$
 $\leq 10 \mu\text{A}$
 2000 Hz
 $\leq 15 \%$
 -25 ° C to 70 ° C
 $\leq 10 \%$
 $\leq 5 \%$
 LED
 yes
 yes
 yes
 IP67
 DIN EN 60947-5-2:2008
 Stainless steel V2A
 PBT
 2 m



KJ2-M8EB16-DPS

Pulsotronic GmbH & Co. KG Neue Schichtstraße 14b 09366 Niederdorf Deutschland +49 (0)37296 930-200

Utilisation category
Cable material
Cable cross
Termination

DC 13
PVC
3x014mm²
2m PVC 3x0,14mm²

Errors and omissions exceptet