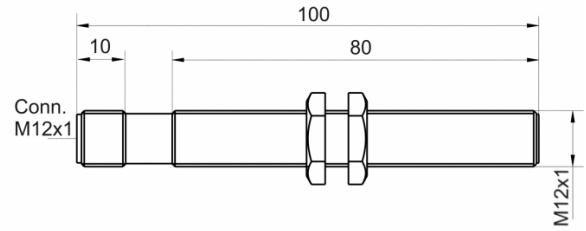
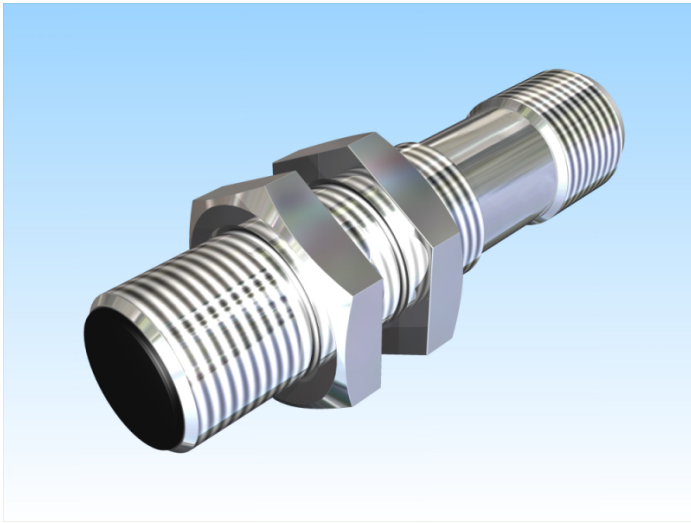


[Article Page](#)

Product Description


inductive sensor analogue



Name
Order number
Matchcode
Switching distance
Mounting

KJ2,5-M12MB100-ANU-V2
08317140865
9914-0865
from 0,5 mm to 2,5 mm

Switch type

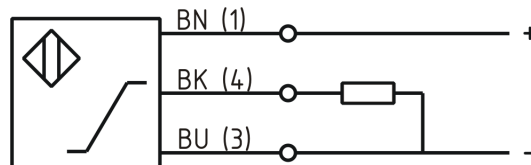
 shielded

Signal Type
Connection

 analog
Analog Voltage

Connection diagramm

 Cable



fine-pitch thread M12 x 100

Dimension (in mm)
Technical Specification
Special features
Operating voltage
Max. ripple
No load current
Switching frequency
Operating temperature
Temperature drift
Repeat accuracy
Linearity
Time delay
Resolution
Reverse voltage protection
Protection category
EMC-level
Housing material
Material active face
Utilisation category
Contact material
Contact surface material

Output Voltage 1 ... 9 V
18 - 30 VDC
≤ 5 %
≤ 10 mA
100 Hz
-25 ° C to 70 ° C
+/- 8 %
≤ 1 %
≤ 3 %
300 ms
4 V / mm
yes
IP67
DIN EN 60947-5-7:2004-06
Brass, nickel plated
PCB
DC 13
CuSn
NiAu



KJ2,5-M12MB100-ANU-V2

Pulsotronic GmbH & Co. KG Neue Schichtstraße 14b 09366 Niederdorf Deutschland +49 (0)37296 930-200

Contact holder
Nominal operating voltage
Termination
internal Load Resistor

PA 6
24 V DC
Connector M12 4pin