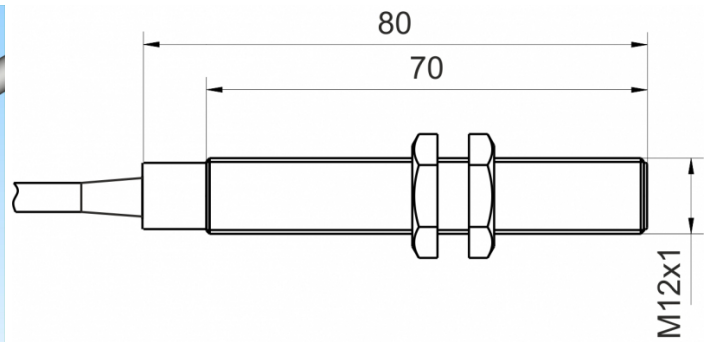
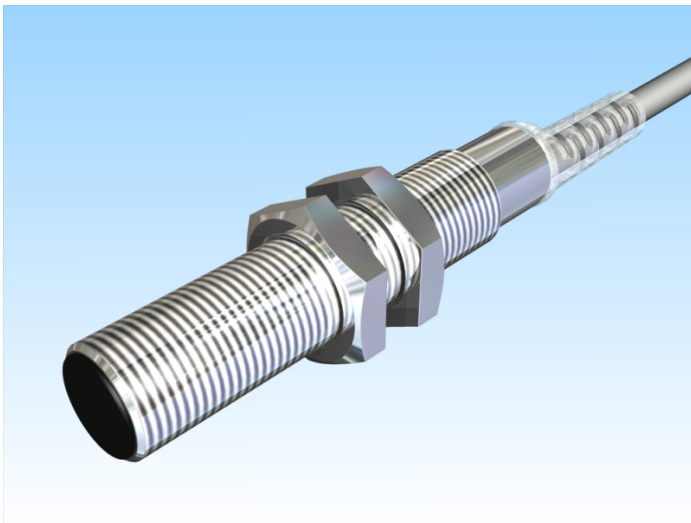


[Article Page](#)

Product Description


inductive sensor analogue



Name  
Order number  
Matchcode  
Switching distance  
Mounting

KJ2,5-M12MB80-ANU-X0409  
08317140802  
9914-0802  
from 0,5 mm to 2,5 mm


Switch type

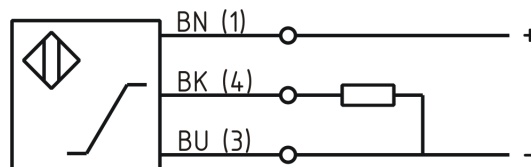
 shielded

Signal Type  
Connection

 analog  
Analog Voltage

Connection diagramm

 Cable



fine-pitch thread M12 x 80

Dimension (in mm)  
Technical Specification  
Special features

Output Voltage 1 ... 9 V  
5m connecting cable  
18 - 30 VDC

Operating voltage  
Max. ripple  
No load current  
Switching frequency  
Operating temperature  
Temperature drift  
Repeat accuracy  
Linearity  
Time delay  
Resolution  
Reverse voltage protection  
Protection category  
EMC-level  
Housing material  
Material active face  
Cable length  
Utilisation category

$\leq 5 \%$   
 $\leq 10 \text{ mA}$   
100 Hz  
-25 ° C to 70 ° C  
 $\pm 8 \%$   
 $\leq 1 \%$   
 $\leq 3 \%$   
300 ms  
4 V / mm  
yes  
IP67  
DIN EN 60947-5-7:2004-06  
Brass, nickel plated  
PCB  
5 m  
DC 13



## **KJ2,5-M12MB80-ANU-X0409**

Pulsotronic GmbH & Co. KG Neue Schichtstraße 14b 09366 Niederdorf Deutschland +49 (0)37296 930-200

Cable material  
Nominal operating voltage  
Cable cross  
internal Load Resistor

PVC LIYCY grau (grey)  
24 V DC  
3x0.14 mm<sup>2</sup>