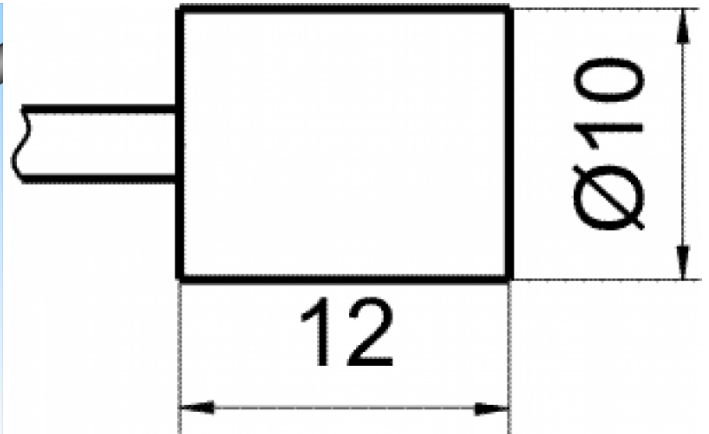
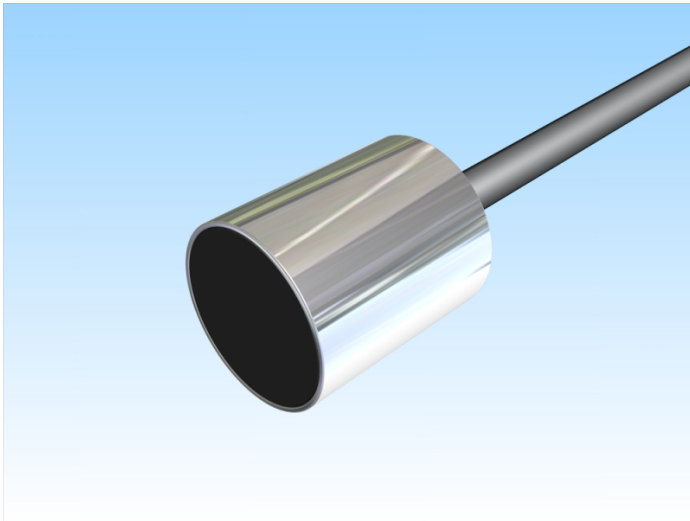


[Article Page](#)

Product Description

inductive sensor Pick-Up




Name
 Order number
 Matchcode
 art_schaltabstand_einstellbar
 Switching distance
 Mounting


 Connection

 Dimension (in mm)
 Technical Specification
 Special features

 Switching frequency
 Switching hysteresis
 Operating temperature
 Repeat accuracy
 Protection category
 EMC-level
 Housing material
 Material active face
 Cable length
 Cable material
 Cable cross
 FIT / MTTF acc. to SIEMENS 29500

KJ3-G10MB12-X0309
 08317061012
 9906-1012
 yes
 3 mm

 shielded

 Cable
 D 10 x 12

PickUp sensor for using with amplifiers
 5m PUR Connecting Cable
 5000 Hz
 bei $S_n = 1,5 \text{ mm} < 0,05 \text{ mm}$
 $-10 \text{ }^\circ\text{C}$ to $70 \text{ }^\circ\text{C}$
 $\leq 0,01 \text{ mm}$
 IP67
 n.n.
 Brass, nickel plated
 PA 6.6
 5 m
 Koax PUR LI2YD11Y
 1x 1,0
 6,56 / 17402y

Errors and omissions exceptet