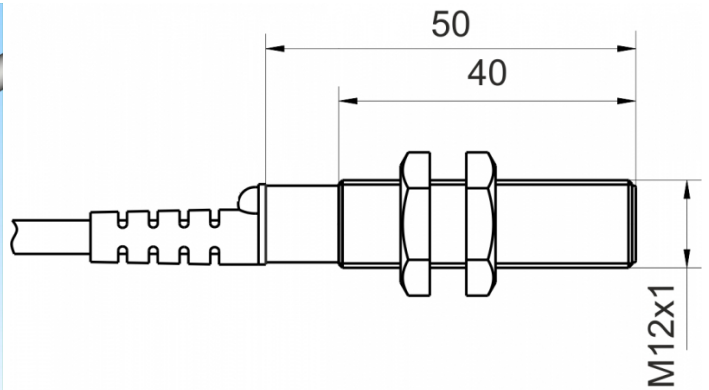
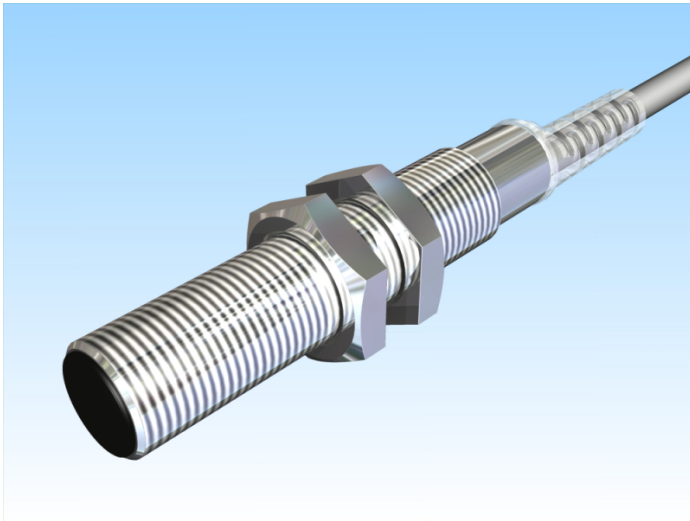


[Article Page](#)

Product Description


inductive sensor analogue



Name
Order number
Switching distance
Mounting

KJ3-M12MB50-ANU
08317143800
from 0,25 mm to 3 mm


Switch type

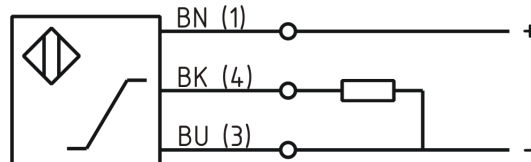
 shielded

Signal Type
Connection

 analog
Analog Voltage

Connection diagramm

 Cable



fine-pitch thread M12 x 50

Dimension (in mm)
Technical Specification
Special features
Operating voltage
Max. ripple
No load current
Switching frequency
Operating temperature
Temperature drift
Repeat accuracy
Linearity
Time delay
Reverse voltage protection
Protection category
EMC-level
Housing material
Material active face
Cable length
Utilisation category
Cable material
Nominal operating voltage
Cable cross

Output Voltage 1 ... 9 V
11 - 35 VDC
≤ 10 %
≤ 5 mA
500 Hz
-25 ° C to 70 ° C
+/-5 %
≤ 1 %
≤ 5 %
300 ms
yes
IP67
DIN EN 60947-5-7:2004-06
Brass, nickel plated
PCB
2 m
DC 13
PVC LIYY grau (grey)
24 V DC
3x0.34 mm²



KJ3-M12MB50-ANU

Pulsotronic GmbH & Co. KG Neue Schichtstraße 14b 09366 Niederdorf Deutschland +49 (0)37296 930-200

FIT / MTTF ac.. to SIEMENS 29500

88,64 / 1288y

Errors and omissions exceptet