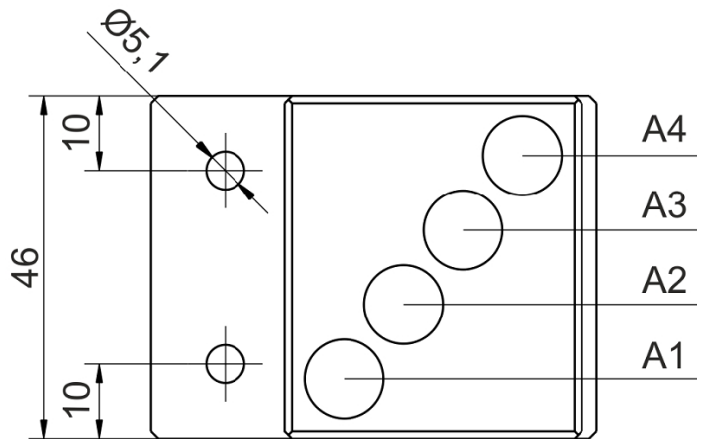
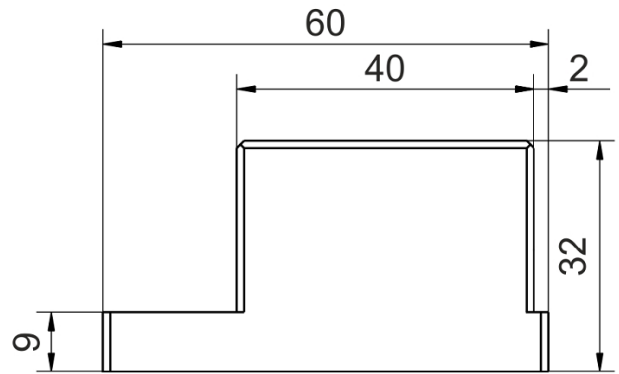
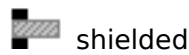


inductive sensor DC

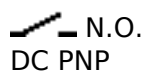


Name
Order number
Switching distance
Mounting

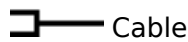
KJ3-Q40AB-DPS
08310001877
3 mm



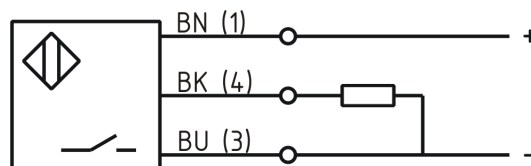
Switch type



Signal Type
Connection



Connection diagramm



Dimension (in mm)
art_gewicht
Technical Specification
Special features

Q 46 x 32 x 60
116

inductive sensor with 4 active heads

function with adjusted oscillating frequencies

Operating voltage
Max. ripple
Voltage drop
Max. load current

detection of closely targets
10 - 30 V DC
≤ 10 %
2,4 V
200 mA

No load current	≤ 10 mA
Leakage current	≤ 10 µA
Switching frequency	1500
Switching hysteresis	≤ 15 %
Operating temperature	-25 ° C to 70 ° C
Temperature drift	≤ 10 %
Repeat accuracy	≤ 10 %
Time delay	300 ms
Short-circuit proof	yes
Overload protection	yes
Reverse voltage protection	yes
Protection category	IP67
EMC-level	DIN EN 60947-5-2:2008
Housing material	Aluminum
Material active face	PA 6.6
Cable length	2 m
Utilisation category	DC 13
Cable material	PVC LIY-LIYC-Y grau
Nominal operating voltage	24 V DC
Cable cross	6x0.14 mm ²
FIT / MTTF acc. to SIEMENS 29500	255,53 / 447y

Errors and omissions excepted