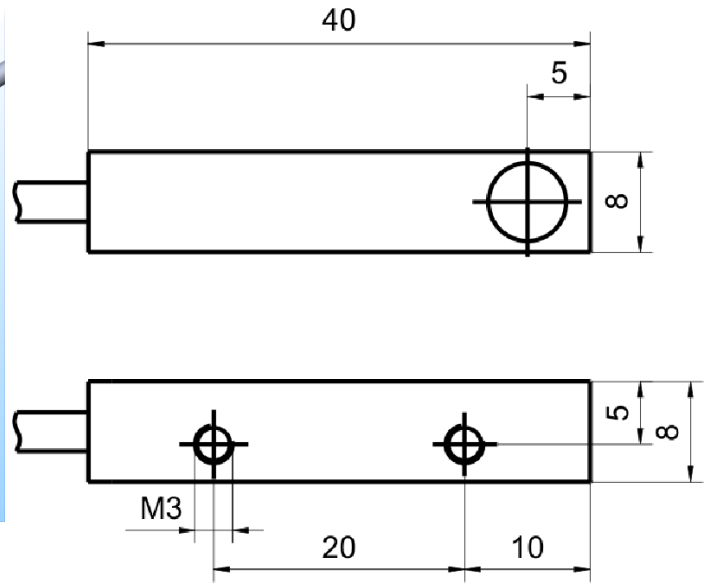
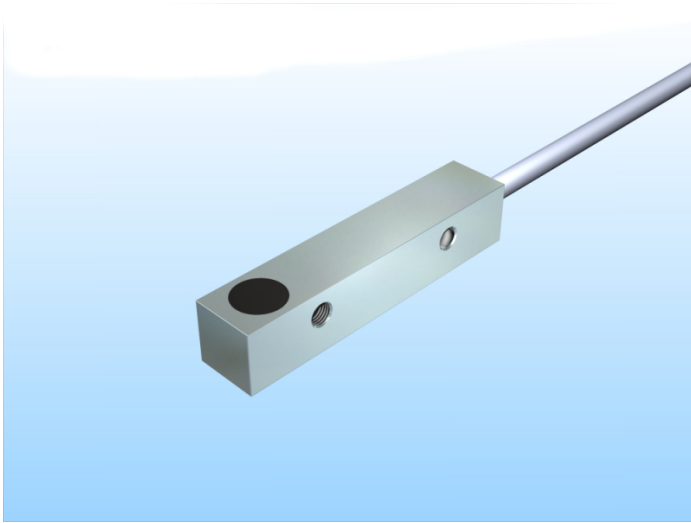


[Article Page](#)

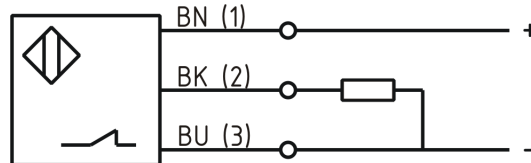
Product Description

inductive sensor DC



Name  
Order number  
Switching distance  
Mounting  
  
Switch type  
  
Signal Type  
Connection  
  
Connection diagramm

KJ3-Q8MB40-DPÖ  
08310000835  
3 mm  
 shielded  
 N.C.  
DC PNP  
 Cable



8 x 8 x 40

Dimension (in mm)  
Technical Specification  
Special features  
Operating voltage  
Max. ripple  
Voltage drop  
Max. load current  
No load current  
Leakage current  
Switching frequency  
Switching hysteresis  
Operating temperature  
Temperature drift  
Repeat accuracy  
Switching state  
Time delay  
Short-circuit proof  
Overload protection  
Reverse voltage protection  
Protection category

quasi-shielded mounting  
10 - 30 VDC  
≤ 10 %  
2,4 V  
200 mA  
≤ 13 mA  
≤ 10 μA  
1000 Hz  
≤ 15 %  
-25°C ° C to 70 ° C  
< 10 %  
≤ 5 %  
LED  
300 ms  
yes  
yes  
yes  
IP 67



## KJ3-Q8MB40-DPÖ

Pulsotronic GmbH & Co. KG Neue Schichtstraße 14b 09366 Niederdorf Deutschland +49 (0)37296 930-200

EMC-level	DIN EN 60947-5-2: 2008
Housing material	Brass, nickel plated
Material active face	Ultramid schwarz (black)
Cable length	2 m
Utilisation category	DC 13
Cable material	PVC LIYY grau (grey)
Cable cross	3x0.14 mm <sup>2</sup>
FIT / MTTF acc. to SIEMENS 29500	49,56 / 2303y

**Errors and omissions exceptet**