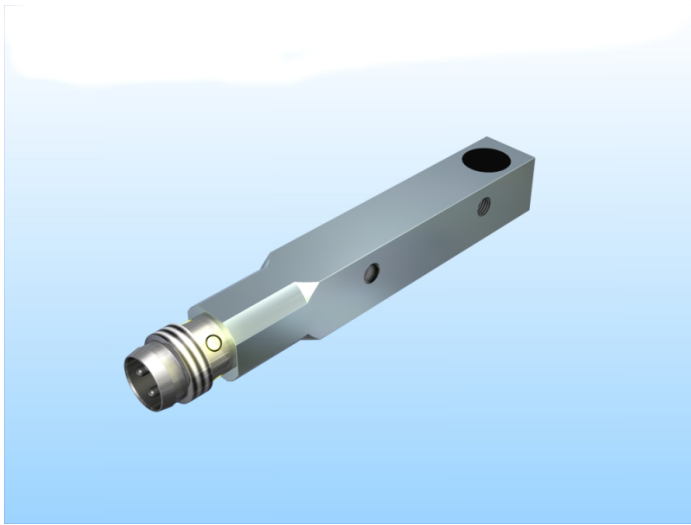
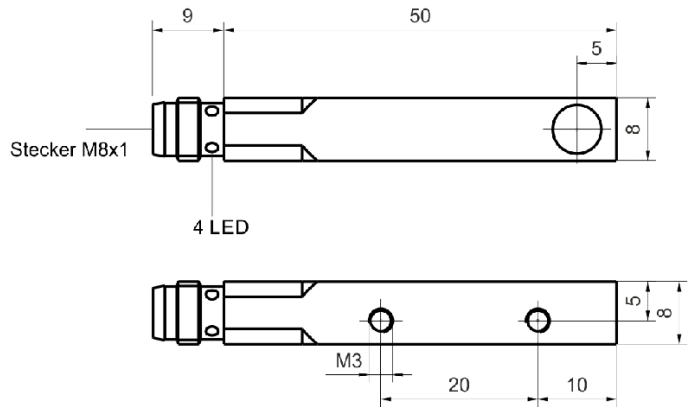


[Article Page](#)

Product Description

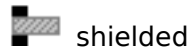


inductive sensor DC

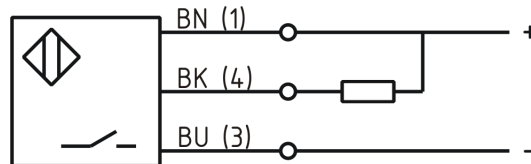


Name  
Order number  
Matchcode  
Switching distance  
Mounting  
  
Switch type  
  
Signal Type  
Connection  
Connection diagramm

KJ3-Q8MB60-DNS-V1  
08317612164  
9861-2164  
3 mm



N.O.  
DC NPN  
connector M8



Q 8 x 8 x 60

Dimension (in mm)  
Technical Specification  
Special features  
Operating voltage  
Max. ripple  
Voltage drop  
Max. load current  
No load current  
Leakage current  
Switching frequency  
Switching hysteresis  
Operating temperature  
Temperature drift  
Repeat accuracy  
Switching state  
Time delay  
Short-circuit proof  
Overload protection  
Reverse voltage protection  
Protection category  
EMC-level  
Housing material

quasi-shielded mounting  
10 - 30 VDC  
≤ 10 %  
2,4 V  
200 mA  
≤ 13 mA  
≤ 10 μA  
1000 Hz  
≤ 15 %  
-25 ° C to 70 ° C  
< 10 %  
≤ 5 %  
LED  
300 ms  
yes  
yes  
yes  
IP67  
DIN EN 60947-5-2: 2008  
Brass, nickel plated



## KJ3-Q8MB60-DNS-V1

Pulsotronic GmbH & Co. KG Neue Schichtstraße 14b 09366 Niederdorf Deutschland +49 (0)37296 930-200

Material active face  
Utilisation category  
Contact material  
Contact surface material  
Termination  
FIT / MTTF acc. to SIEMENS 29500

Ultramid schwarz (black)  
DC 13  
Cu  
NiAu  
Connector M8 3pin  
58,05 / 1966y

**Errors and omissions exceptet**