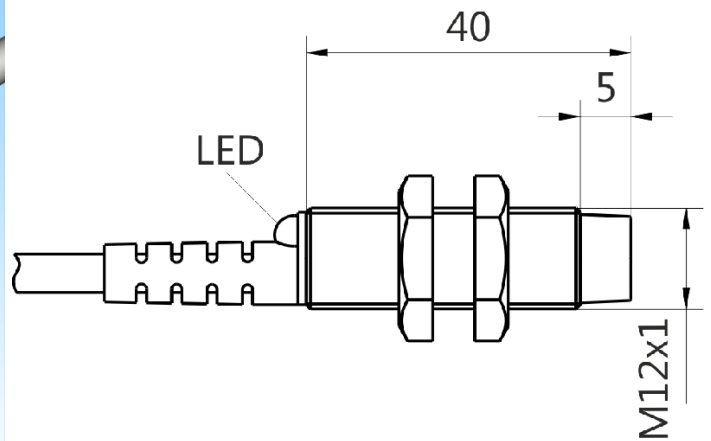
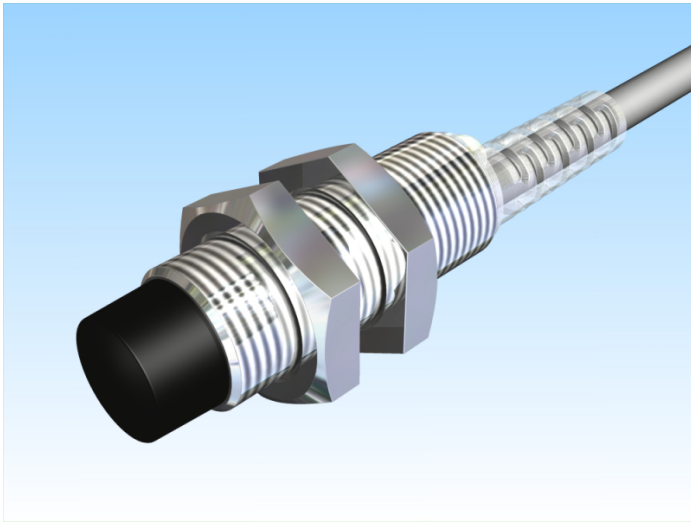


[Article Page](#)

Product Description

inductive sensor temperature immune




Name
Order number
Switching distance
Mounting


Switch type


Signal Type
Connection

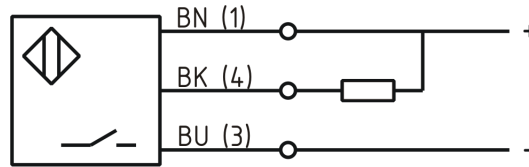
Connection diagramm

KJ4-M12MN40-DNS-T-X0303
08317626310
4 mm

 non shielded

 N.O.
DC NPN

 Cable



fine-pitch thread M12 x 40

Dimension (in mm)
Technical Specification
Special features
Operating voltage
Max. ripple
Voltage drop
Max. load current
No load current
Leakage current
Switching frequency
Switching hysteresis
Operating temperature
Temperature drift
Repeat accuracy
Switching state
Time delay
Short-circuit proof
Overload protection
Reverse voltage protection
Protection category
EMC-level
Housing material

temperature resistant up to 100°C
10 - 30 V DC
≤ 10 %
2,4 V
200 mA
≤ 10 mA
≤ 10 µA
800
≤ 15 %
-40 ° C to 100 ° C
≤ 10 %
≤ 10 %
LED
300 ms
yes
yes
yes
IP67
DIN EN 60947-5-2:2008
Brass, nickel plated



KJ4-M12MN40-DNS-T-X0303

Pulsotronic GmbH & Co. KG Neue Schichtstraße 14b 09366 Niederdorf Deutschland +49 (0)37296 930-200

Material active face	Ultramid B3ZG3 schwarz
Cable length	2 m
Utilisation category	3
Cable material	PUR LIFY11Y schwarz
Nominal operating voltage	24 V DC
Cable cross	3x0.34 mm ²
FIT / MTTF acc. to SIEMENS 29500	55,73 / 2048y

Errors and omissions exceptet