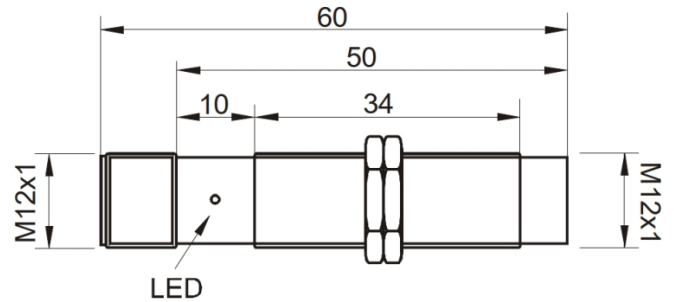
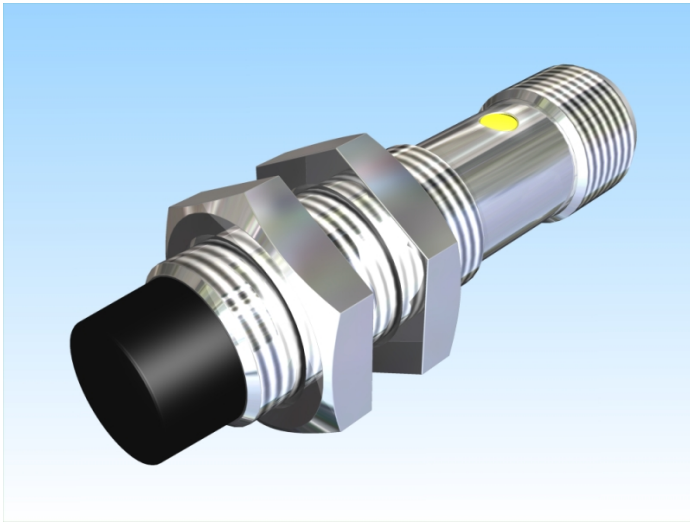


[Article Page](#)

Product Description

inductive sensor temperature immune



Name
Order number
Switching distance
Mounting

KJ4-M12MN60-DPS-V2-T
08316626165
4 mm

non shielded

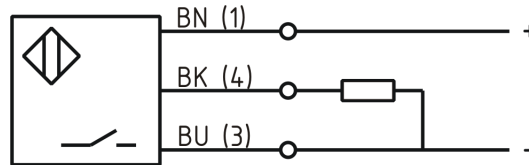
Switch type

N.O.
DC PNP

Signal Type
Connection

Connector

Connection diagramm



fine-pitch thread M12 x 60

Dimension (in mm)
Technical Specification
Special features
Operating voltage
Max. ripple
Voltage drop
Max. load current
No load current
Leakage current
Switching frequency
Switching hysteresis
Operating temperature
Temperature drift
Repeat accuracy
Switching state
Short-circuit proof
Overload protection
Reverse voltage protection
Protection category
EMC-level
Material active face
Termination

temperature-resistant
10 - 30 V DC
≤ 10 %
2,4 V
200 mA
≤ 10 mA
≤ 10 μA
1000
≤ 15 %
-40 ° C to 100 ° C
≤ 10 %
≤ 10 %
LED
yes
yes
yes
IP67
DIN EN 60947-5-2:2008
PCB
Connector M12 4pol



KJ4-M12MN60-DPS-V2-T

Pulsotronic GmbH & Co. KG Neue Schichtstraße 14b 09366 Niederdorf Deutschland +49 (0)37296 930-200

Errors and omissions exceptet