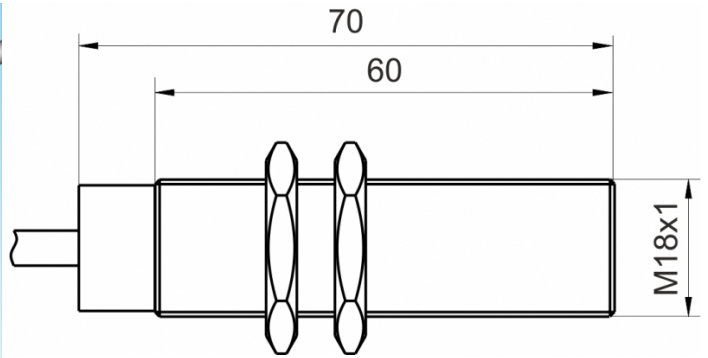
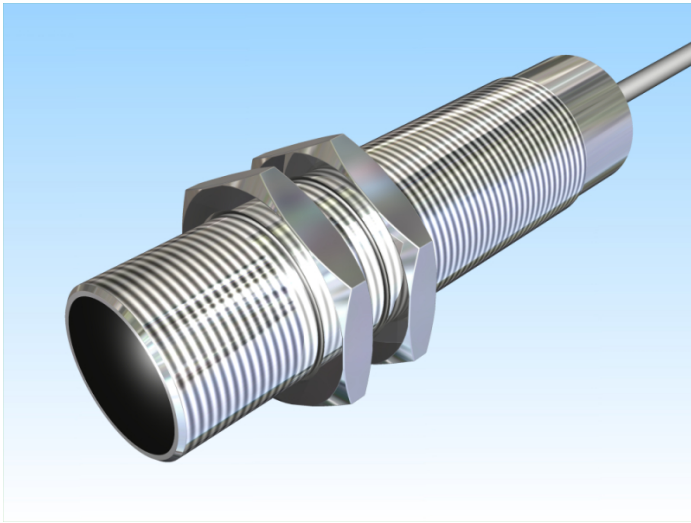


[Article Page](#)

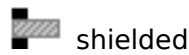
Product Description

inductive sensor high temperature

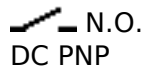


Name
Order number
Switching distance
Mounting

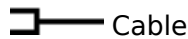
KJ5-M18EB70-DPS-HT180-X0202
08310001716
5 mm



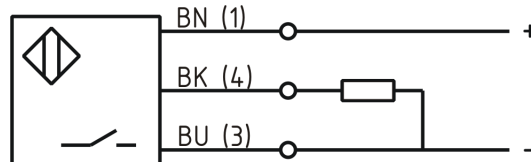
Switch type



Signal Type
Connection



Connection diagramm



Dimension (in mm)
Technical Specification
Special features

fine-pitch thread M18 x 70

Operating voltage
Max. ripple
Voltage drop
Max. load current
No load current
Leakage current
Switching frequency
Switching hysteresis
Operating temperature
Temperature drift
Time delay
Short-circuit proof
Reverse voltage protection
Protection category
EMC-level
Housing material
Material active face
Cable length

high temperature sensor up to 180°C
Connecting Cable Silicone
10 - 35 V DC
≤ 10 %
2 V
150 mA
≤ 15 mA
≤ 250 µA
400 Hz
≤ 15 %
-25 ° C to 180 ° C
+/- 15 %
1,2 ms
yes
yes
IP65
DIN EN 60947-5-2: 2008
Stainless steel V2A
VECTRA
2 m



KJ5-M18EB70-DPS-HT180-X0202

Pulsotronic GmbH & Co. KG Neue Schichtstraße 14b 09366 Niederdorf Deutschland +49 (0)37296 930-200

Utilisation category	DC 13
Cable material	Silikon Si-HF grau
Conductor diameter	1,5 mm mm mm
Nominal operating voltage	24 V DC
Cable cross	3x0.25 ²
MTTF acc. to SIEMENS 29500	185y

Errors and omissions exceptet