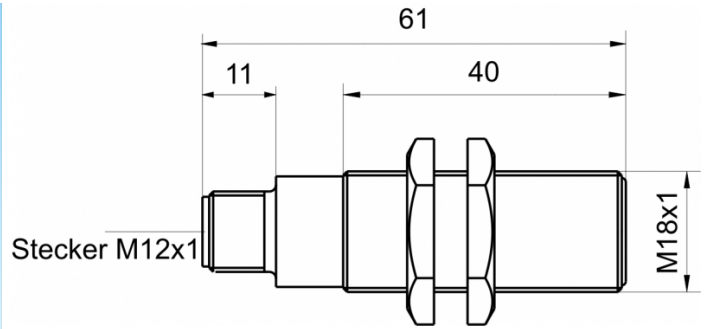
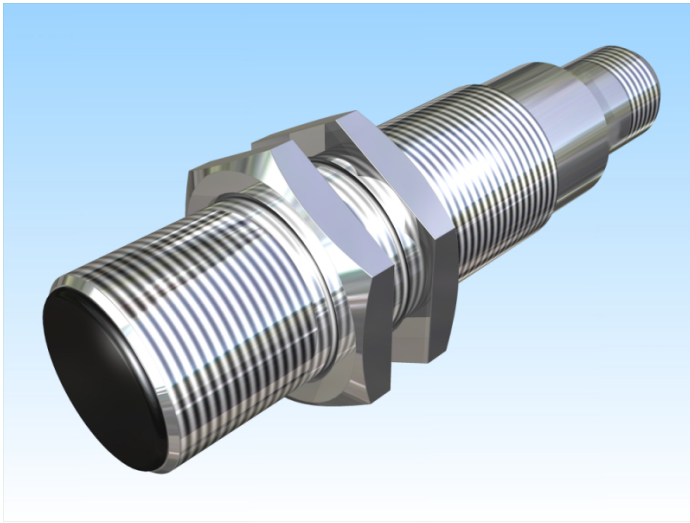


[Article Page](#)

Product Description

inductive sensor analogue





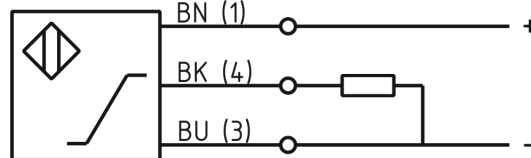
Name
Order number
Matchcode
Switching distance
Mounting

Switch type

Signal Type
Connection
Connection diagramm

KJ5-M18MB61-ANI-V2-F2
08317141736
9914-1736
from 0,5 mm to 5 mm

 shielded
 analog current
analog current
connector M12



fine-pitch thread M18 x 61

Dimension (in mm)
Technical Specification
Special features

Output Current 4 ... 20 mA
together with part 08317141735 for opposite
mounting

Operating voltage
Max. ripple
Max. load current
No load current
Switching frequency
Operating temperature
Temperature drift
Repeat accuracy
Linearity
Analog output
Time delay
Resolution
Short-circuit proof
Reverse voltage protection
Protection category
EMC-level
Housing material
Material active face

11 - 35 VDC
≤ 10 %
30 mA
≤ 10 mA
400 Hz
-25 ° C to 70 ° C
+/-5 %
≤ 1 %
≤ 5 %
Pulso_has1
300 ms
3,56 mA / mm
yes
yes
IP67
DIN EN 60947-5-7: 2004
Brass, nickel plated
PCB



KJ5-M18MB61-ANI-V2-F2

Pulsotronic GmbH & Co. KG Neue Schichtstraße 14b 09366 Niederdorf Deutschland +49 (0)37296 930-200

Utilisation category	DC13
Contact material	CuSn
Contact surface material	NiAu
Contact holder	PA 6
Nominal operating voltage	24 V DC
Termination	Connector M12 4pin
Minimum Load Resistor	1 kOhm
FIT / MTTF acc. to SIEMENS 29500	79,07 / 1444y
Marking	GREEN

Errors and omissions exceptet