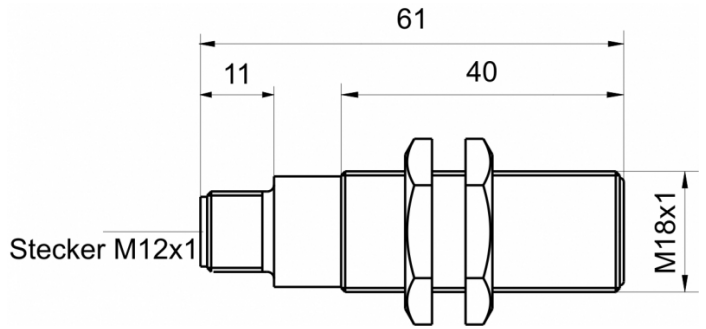
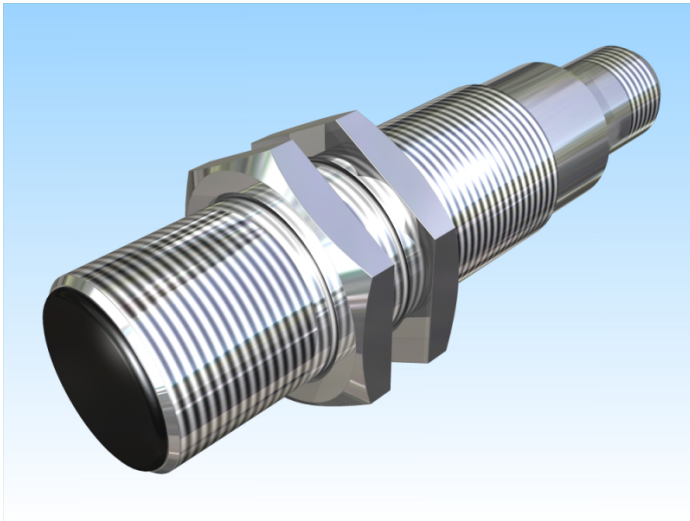


[Article Page](#)

Product Description

inductive sensor analogue




Name
Order number
Switching distance
Mounting

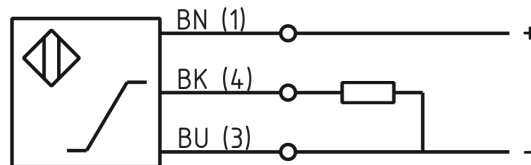
Switch type

Signal Type
Connection
Connection diagramm

KJ5-M18MB61-ANU-V2
08317143765
from 0,5 mm to 5 mm

 shielded

 analog
Analog Voltage
connector M12



fine-pitch thread M18 x 61

Dimension (in mm)
Technical Specification
Special features
Operating voltage
Max. ripple
No load current
Switching frequency
Operating temperature
Temperature drift
Repeat accuracy
Linearity
Analog output
Time delay
Resolution
Reverse voltage protection
Protection category
EMC-level
Housing material
Material active face
Utilisation category
Contact material
Contact surface material
Contact holder

Output Voltage 1 ... 9 Volt
11 - 35 VDC
≤ 10 %
≤ 5 mA
400 Hz
-25 ° C to 70 ° C
+/-5 %
≤ 1 %
≤ 5%
Pulso_has1
300 ms
1,78 V / mm
yes
IP67
DIN EN 60947-5-7:2004-06
Brass, nickel plated
PCB
DC 13
CuSn
NiAu
Pa 6



KJ5-M18MB61-ANU-V2

Pulsotronic GmbH & Co. KG Neue Schichtstraße 14b 09366 Niederdorf Deutschland +49 (0)37296 930-200

Nominal operating voltage

24 V DC

Termination

Connector M12 4pin

internal Load

> 1kOhm

FIT / MTTF acc. to SIEMENS 29500

89,13 / 1281y

Errors and omissions exceptet