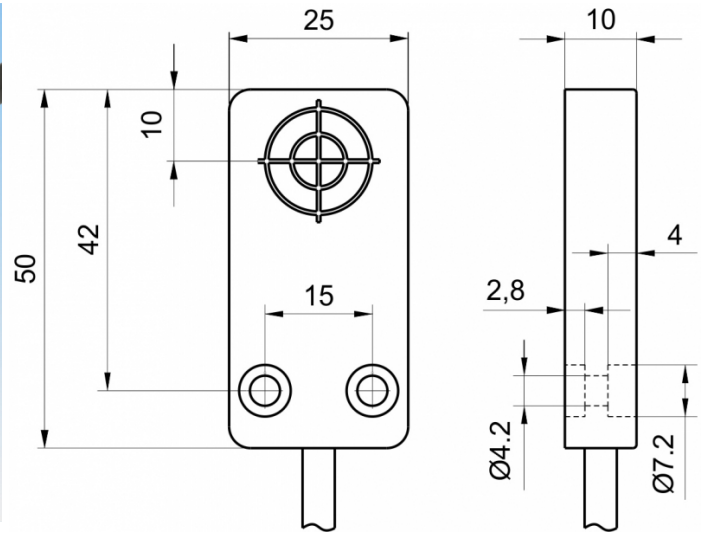
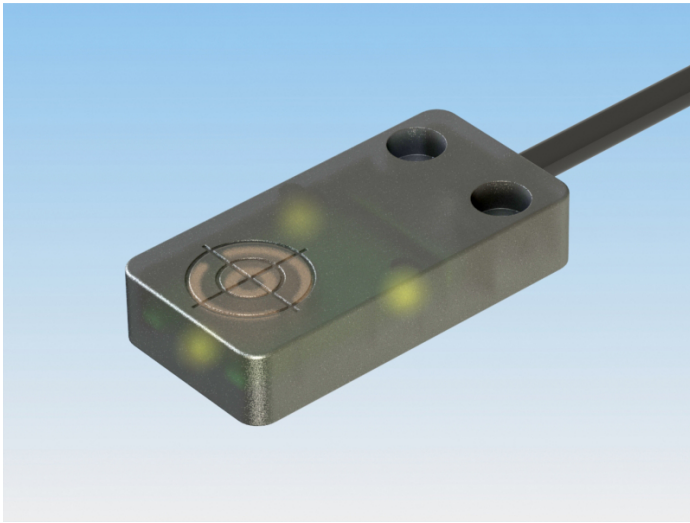


[Article Page](#)


Product Description

inductive sensor DC



Name
Order number
Switching distance
Mounting


KJ5-Q25KB-DPÖ
08310001285
5 mm

 shielded

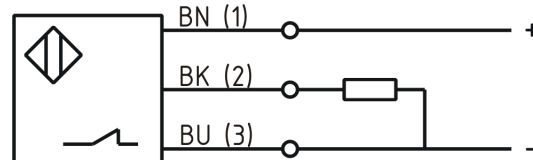
Switch type

 N.C.
PNP

Signal Type
Connection

 Cable

Connection diagramm



Q 25 x 10 x 50

Dimension (in mm)
Technical Specification
Operating voltage
Max. ripple
Voltage drop
Max. load current
No load current
Leakage current
Switching frequency
Switching hysteresis
Operating temperature
Temperature drift
Repeat accuracy
Switching state
Short-circuit proof
Overload protection
Reverse voltage protection
Protection category
EMC-level
Housing material
Cable length
Utilisation category

10 - 30 V DC
≤ 10 %
2,4 V
200 mA
≤ 13 mA
≤ 10 µA
1000 Hz
≤ 15 %
-25 ° C to 70 ° C
≤ 10 %
≤ 5 %
LED
yes
yes
yes
IP 67
nach DIN EN 60947-5-2: 2008
PA 6.6
2 m
DC 13



KJ5-Q25KB-DPÖ

Pulsotronic GmbH & Co. KG Neue Schichtstraße 14b 09366 Niederdorf Deutschland +49 (0)37296 930-200

Cable material
Cable cross
FIT / MTTF

PVC LIYY grau
3x0.34 mm²
90,12 / 1267y

Errors and omissions exceptet