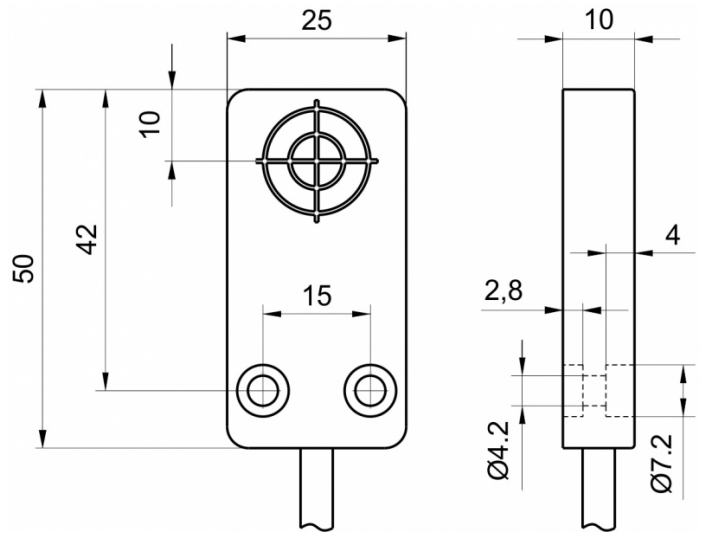
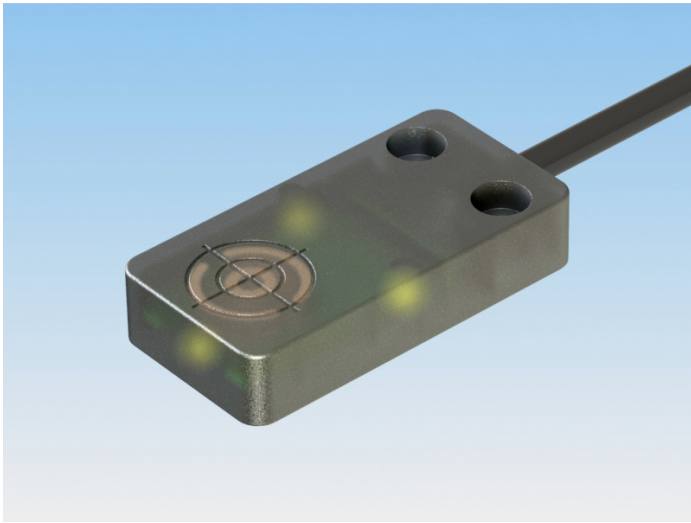


[Article Page](#)


Product Description

inductive sensor DC




Name  
Order number  
Switching distance  
Mounting


KJ5-Q25KB-DPS  
08310000772  
5 mm

 shielded

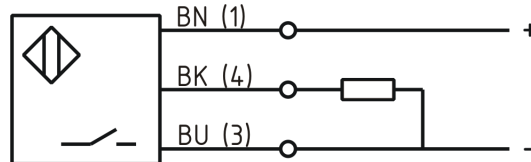
Switch type

 N.O.  
DC PNP

Signal Type  
Connection

 Cable

Connection diagramm



Q 25 x 10 x 50

Dimension (in mm)  
Technical Specification  
Operating voltage  
Max. ripple  
Voltage drop  
Max. load current  
No load current  
Leakage current  
Switching frequency  
Switching hysteresis  
Operating temperature  
Temperature drift  
Repeat accuracy  
Switching state  
Short-circuit proof  
Overload protection  
Reverse voltage protection  
Protection category  
EMC-level  
Housing material  
Cable length  
Utilisation category

10 - 30 VDC  
≤ 10 %  
2,4 V  
200 mA  
≤ 13 mA  
≤ 10 µA  
1000  
≤ 15 %  
-25 ° C to 70 ° C  
≤ 10 %  
≤ 5 %  
LED  
yes  
yes  
yes  
IP 67  
DIN EN 60947-5-2 :2008  
PA 6.6  
2 m  
DC 13



## KJ5-Q25KB-DPS

Pulsotronic GmbH & Co. KG Neue Schichtstraße 14b 09366 Niederdorf Deutschland +49 (0)37296 930-200

Cable material  
Cable cross  
FIT / MTTF

PVC LIYY grau  
3x0.34 mm<sup>2</sup>  
99,29 / 1150y

**Errors and omissions exceptet**