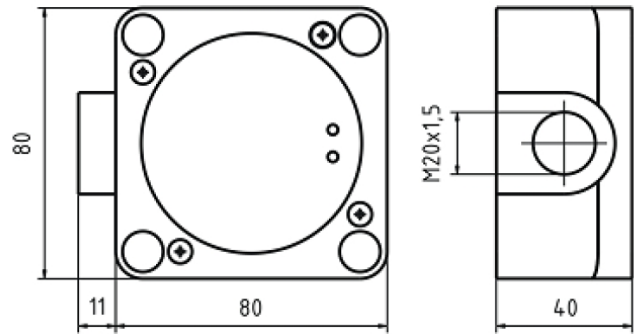
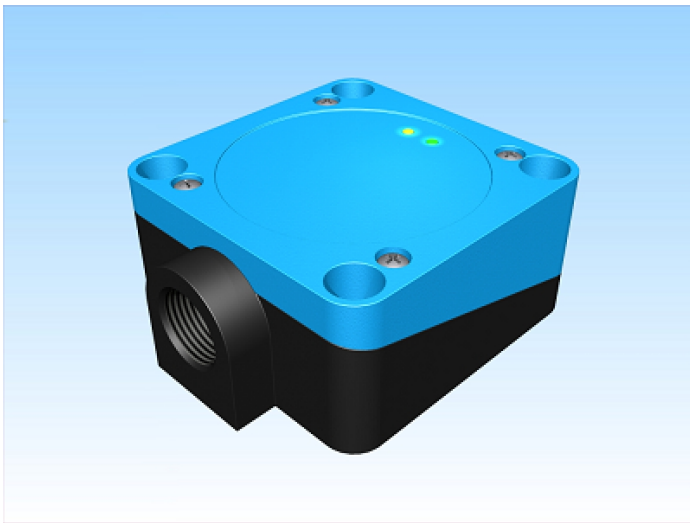


[Article Page](#)

Product Description

inductive sensor AC





Name
Order number
Matchcode
Switching distance
Mounting

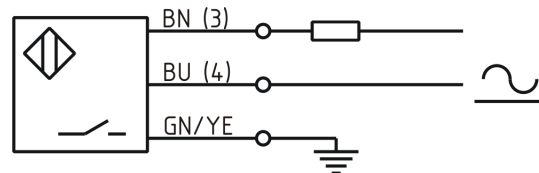
Switch type

Signal Type
Connection
Connection diagramm

KJ50-Q80KN-AZS
08317551000
9855-1000
50 mm

 non shielded

 N.O.
AC
Terminal



Dimension (in mm)
Technical Specification
Operating voltage
Voltage drop
Max. load current
Leakage current
Switching frequency
Switching hysteresis
Operating temperature
Temperature drift
Repeat accuracy
Operating state
Switching state
Short-circuit proof
Overload protection
Reverse voltage protection
Protection category
EMC-level
Housing material
Termination

Q 80 x 40 x 80

20 - 250 V AC
8 V
400 mA
≤ 1,8 mA
25
≤ 15 %
-25 ° C to 70 ° C
≤ 10 %
≤ 5 %
LED
LED
yes
yes
yes
IP67
DIN EN 60947-5-2:2008
PBT
Terminal 1,5mm²

Errors and omissions excepted

