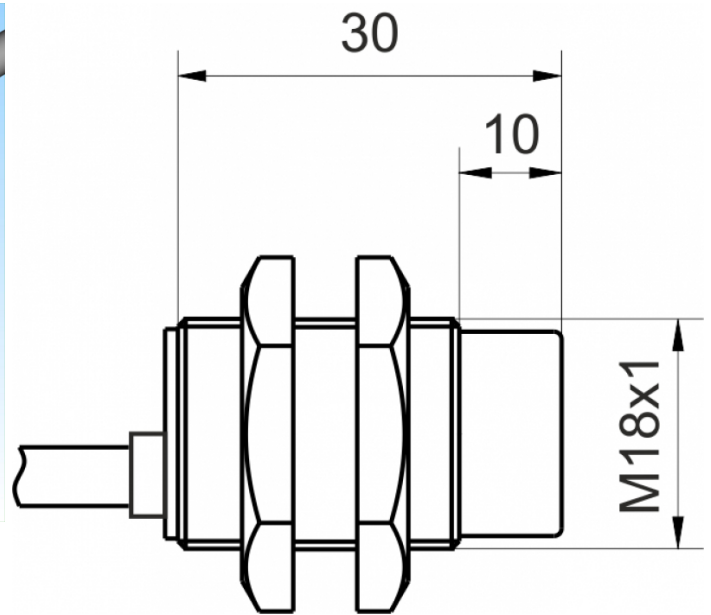
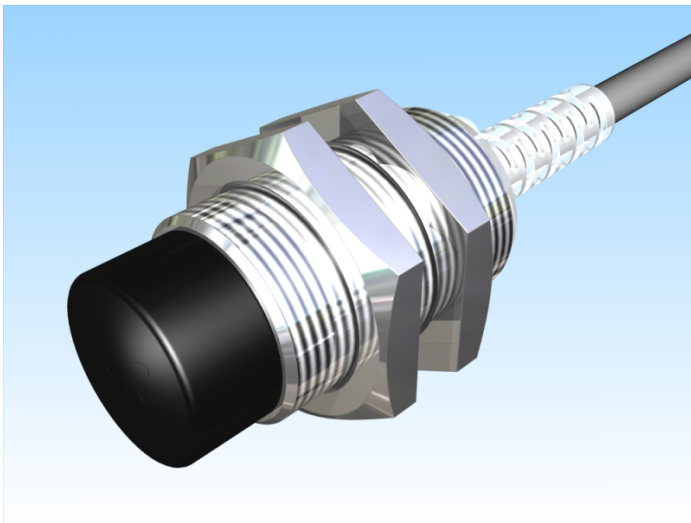


[Article Page](#)

Product Description


inductive sensor NAMUR




Name
Order number
Matchcode
Switching distance
Mounting

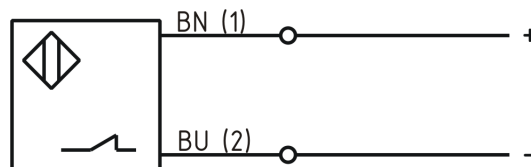
KJ8-M18MN30-NA-X0303
08317320630
9932-0630
8 mm

Signal Type
Connection

 non shielded
Namur

Connection diagramm

 Cable



Dimension (in mm)
Technical Specification
Special features
Operating voltage
Max. ripple
No load current
Switching frequency
Operating temperature
Temperature drift
Repeat accuracy
Time delay
Short-circuit proof
Overload protection
Reverse voltage protection
Protection category
EMC-level
Housing material
Material active face
Cable length
Utilisation category
Cable material

fine-pitch thread M18 x 30

PUR connecting cable
6 - 12 V DC
≤ 5 %
≤ 3,5 mA
500 Hz
-25 ° C to 60 ° C
≤ 10 %
≤ 10 %
100 ms
yes
yes
yes
IP67
DIN EN 60947-5-6:2000-12
Brass, nickel plated
PCB
2 m
DC 13
PUR LIFY11Y black



KJ8-M18MN30-NA-X0303

Pulsotronic GmbH & Co. KG Neue Schichtstraße 14b 09366 Niederdorf Deutschland +49 (0)37296 930-200

Nominal operating voltage	8,2 V DC
Cable cross	2x0.34 mm ²
Load Current OFF	ca. 0,5 mA
Load Current ON	ca. 3,5 mA
FIT / MTTF acc. to SIEMENS 29500	17,40 / 6561y

Errors and omissions exceptet