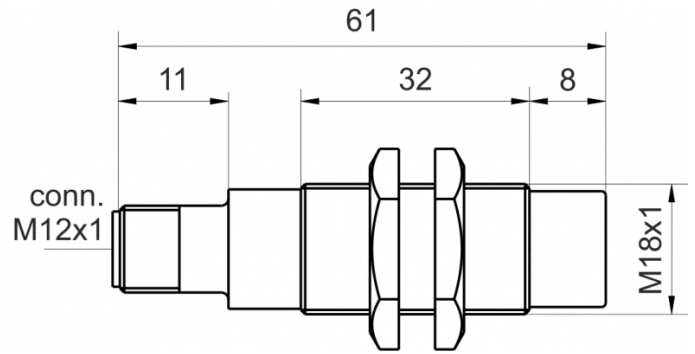
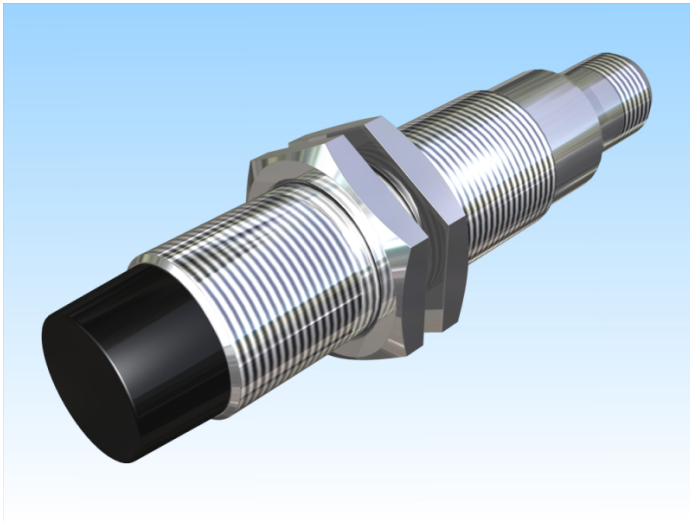


[Article Page](#)


Product Description


inductive sensor analogue

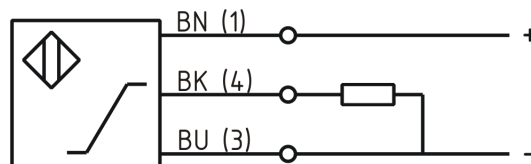


Name  
Order number  
Switching distance  
Mounting  
  
Switch type  
  
Signal Type  
Connection  
Connection diagramm

KJ8-M18MN61-ANI-V2  
08310001031  
from 1 mm to 8 mm

 non shielded

 analog  
analog current  
connector M12



fine-pitch thread M18 x 61

Dimension (in mm)  
Technical Specification  
Special features  
Operating voltage  
Max. ripple  
No load current  
Switching frequency  
Operating temperature  
Temperature drift  
Repeat accuracy  
Linearity  
Analog output  
Time delay  
Resolution  
Reverse voltage protection  
Protection category  
EMC-level  
Housing material  
Material active face  
Utilisation category  
Contact material  
Contact surface material  
Contact holder

Output Current 4 ... 20 mA  
11 - 35 VDC  
≤ 10 %  
≤ 10 mA  
400 Hz  
-25 ° C to 70 ° C  
+/-5 %  
≤ 1 %  
≤ 5 %  
Pulso\_has1  
300 ms  
3,56 mA / mm  
yes  
IP67  
DIN EN 60947-5-7:2004-06  
Brass, nickel plated  
PCB  
DC 13  
CuSn  
NiAu  
PA 6



## KJ8-M18MN61-ANI-V2

Pulsotronic GmbH & Co. KG Neue Schichtstraße 14b 09366 Niederdorf Deutschland +49 (0)37296 930-200

Nominal operating voltage

24 V DC

Termination

Connector M12 4pin

minimum load resistor

1 k Ohm

FIT / MTTF acc. to SIEMENS 29500

74,01 / 1542y

**Errors and omissions exceptet**