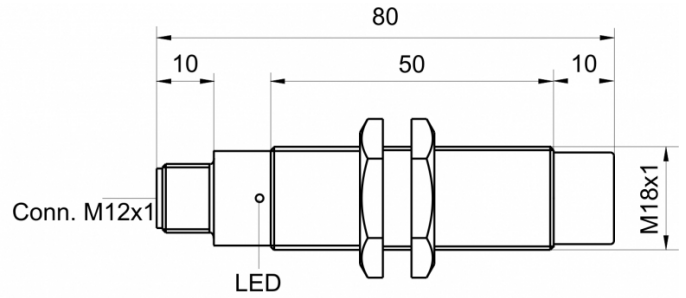
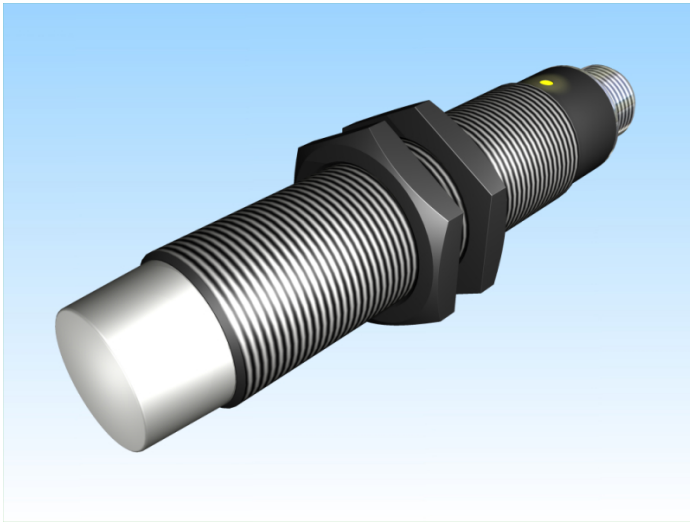


[Article Page](#)

Product Description

inductive sensor weld immune



Name
Order number
Matchcode
Switching distance
Mounting

Switch type

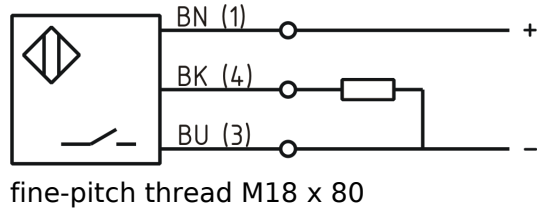
Signal Type
Connection
Connection diagramm

KJ8-M18MN80-DPS-V2-SF
08317645965
9964-5965
8 mm

 non shielded

 N.O.
DC PNP
connector M12

Dimension (in mm)
Technical Specification
Special features



Operating voltage
Max. ripple
Voltage drop
Max. load current
No load current
Leakage current
Switching frequency
Switching hysteresis
Operating temperature
Temperature drift
Repeat accuracy
Switching state
Time delay
Short-circuit proof
Overload protection
Reverse voltage protection

fine-pitch thread M18 x 80

resistant against welding current up to 20 kA in a distance of 25mm to wires
proofed against alternating magnetic fields up to 150 mT
10 - 30 V DC
≤ 10 %
2,4 V
200 mA
≤ 10 mA
≤ 10 µA
15 Hz
≤ 15 %
-25 ° C to 75 ° C
≤ 10 %
≤ 10 %
LED
300 ms
yes
yes
yes



KJ8-M18MN80-DPS-V2-SF

Pulsotronic GmbH & Co. KG Neue Schichtstraße 14b 09366 Niederdorf Deutschland +49 (0)37296 930-200

Protection category	IP67
EMC-level	DIN EN 60947-5-2:2008
Housing material	Brass, nickel plated
Material active face	PCB
Utilisation category	DC 13
Contact material	CuSn
Contact surface material	NiAu
Contact holder	PA 6
Nominal operating voltage	24 V DC
Termination	Connector M12 4pin
FIT / MTTF acc. to SIEMENS 29500	121,81 / 937y

Errors and omissions exceptet