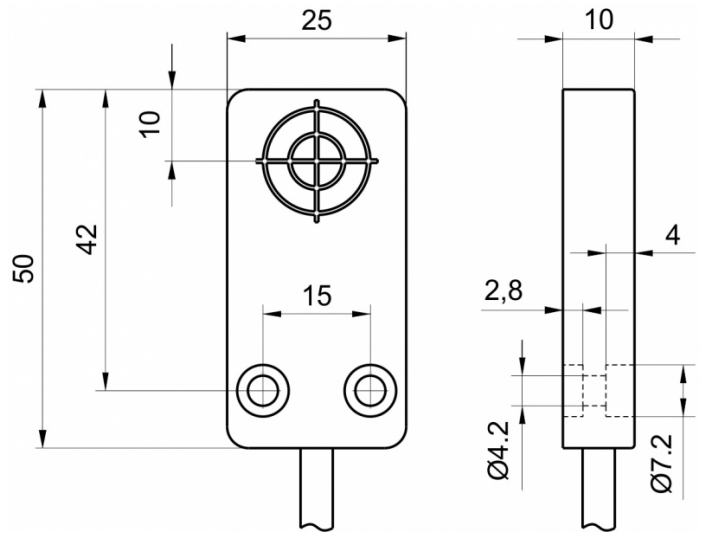
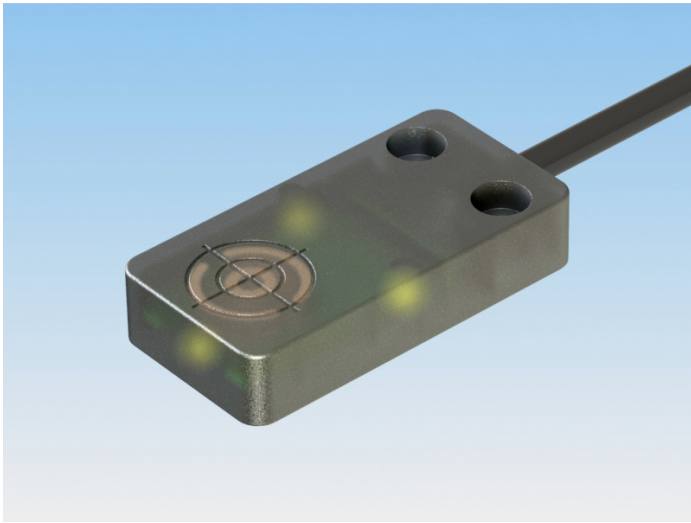


[Article Page](#)


Product Description

inductive sensor DC




Name
Order number
Switching distance
Mounting


KJ8-Q25KN-DPS
08310000056
8 mm

 non shielded

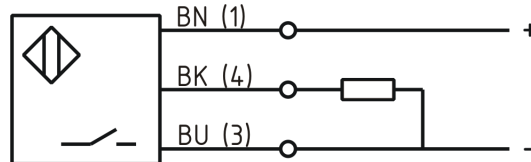
Switch type

 N.O.
DC PNP

Signal Type
Connection

 Cable

Connection diagramm



Q 25 x 10 x 50

Dimension (in mm)
Technical Specification
Special features
Operating voltage
Max. ripple
Voltage drop
Max. load current
No load current
Leakage current
Switching frequency
Switching hysteresis
Operating temperature
Temperature drift
Repeat accuracy
Switching state
Short-circuit proof
Overload protection
Reverse voltage protection
Protection category
EMC-level
Housing material
Cable length

translucent housing
10 - 30 VDC
≤ 10 %
2,4 V
200 mA
≤ 13 mA
≤ 10 µA
800 Hz
≤ 15 %
-25 ° C to 70 ° C
≤ 10 %
≤ 5 %
LED
yes
yes
yes
IP 67
DIN EN 60947-5-2: 2008
PA 6.6
2 m



KJ8-Q25KN-DPS

Pulsotronic GmbH & Co. KG Neue Schichtstraße 14b 09366 Niederdorf Deutschland +49 (0)37296 930-200

Utilisation category
Cable material
Cable cross
FIT / MTTF

DC 13
PVC LIYY grau
3x0.34 mm²
99,29 / 1150y

Errors and omissions exceptet