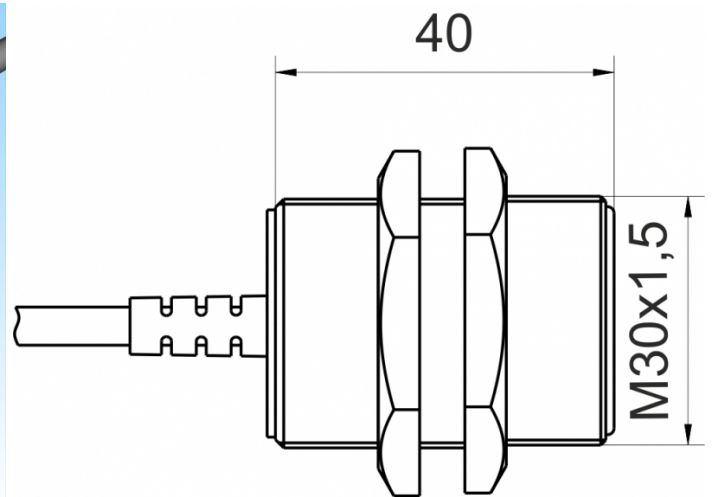
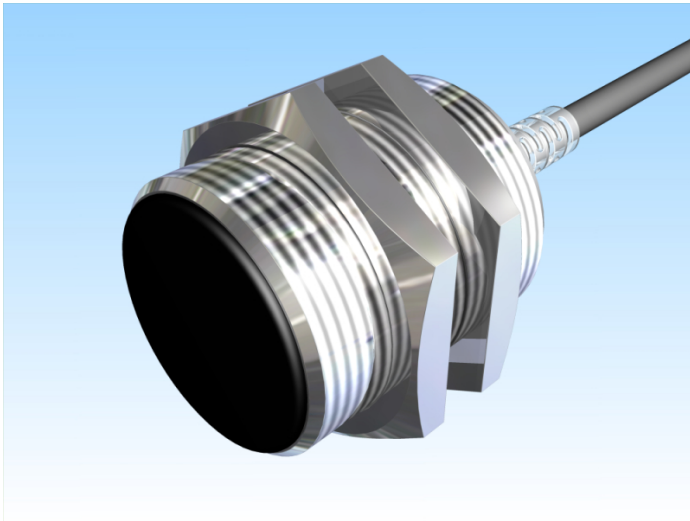


[Article Page](#)

Product Description


inductive sensor analogue




Name  
Order number  
Matchcode  
Switching distance  
Mounting

KJ9-M30MB40-ANI  
08317141600  
9914-1600  
from 1 mm to 9 mm


Switch type

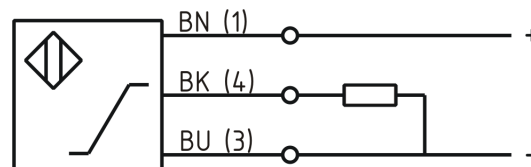
 shielded

Signal Type  
Connection

 analog  
analog current

Connection diagramm

 Cable



fine-pitch thread M30 x 40

Dimension (in mm)  
Technical Specification  
Special features  
Operating voltage  
Max. ripple  
No load current  
Switching frequency  
Operating temperature  
Temperature drift  
Repeat accuracy  
Linearity  
Time delay  
Resolution  
Reverse voltage protection  
Protection category  
EMC-level  
Housing material  
Material active face  
Cable length  
Utilisation category  
Cable material

Output Current 4 ... 20 mA  
11 - 35 VDC  
≤ 5 %  
≤ 10 mA  
300 Hz  
-25 ° C to 70 ° C  
+/-5 %  
≤ 1 %  
≤ 5 %  
300 ms  
2 mA / mm  
yes  
IP67  
DIN EN 60947-5-7:2004-06  
Brass, nickel plated  
PCB  
2 m  
DC 13  
PVC LIYY grau (grey)



## **KJ9-M30MB40-ANI**

Pulsotronic GmbH & Co. KG Neue Schichtstraße 14b 09366 Niederdorf Deutschland +49 (0)37296 930-200

Nominal operating voltage  
Cable cross  
internal load resistor

24 V DC  
3x0.34 mm<sup>2</sup>