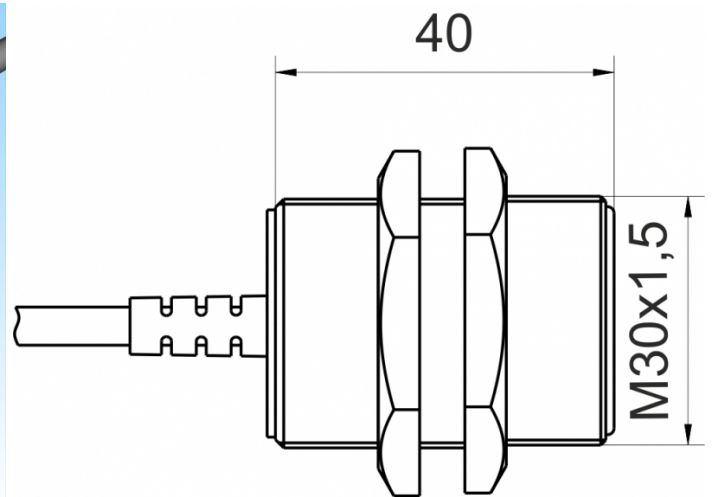
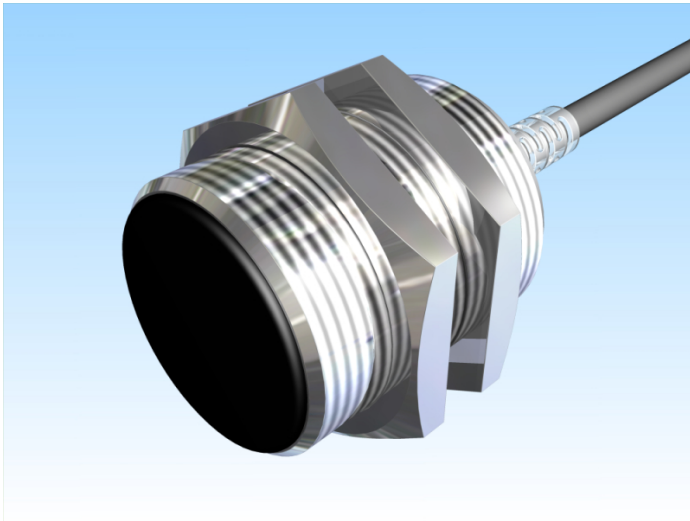


[Article Page](#)

Product Description

inductive sensor analogue






Name
Order number
Switching distance
Mounting

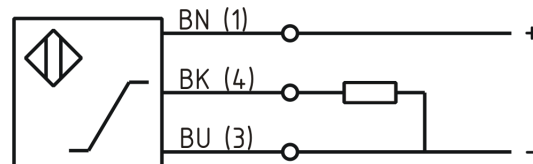
Switch type

Signal Type
Connection

Connection diagramm

KJ9-M30MB40-ANU
08317143600
from 1 mm to 9 mm

-  shielded
-  analog
Analog Voltage
-  Cable



fine-pitch thread M30 x 40

Dimension (in mm)
Technical Specification
Special features
Operating voltage
Max. ripple
No load current
Switching frequency
Operating temperature
Temperature drift
Repeat accuracy
Linearity
Time delay
Resolution
Reverse voltage protection
Protection category
EMC-level
Housing material
Material active face
Cable length
Utilisation category
Cable material
Nominal operating voltage

Output Voltage 1 ... 9 Volt
11 - 35 VDC
≤ 5 %
≤ 5 mA
400 Hz
-25 ° C to 70 ° C
+/-5 %
≤ 1 %
≤ 5 %
300 ms
1 V / mm
yes
IP67
DIN EN 60947-5-7:2004-06
Brass, nickel plated
PCB
2 m
DC 13
PVC LIYY grau (grey)
24 V DC



KJ9-M30MB40-ANU

Pulsotronic GmbH & Co. KG Neue Schichtstraße 14b 09366 Niederdorf Deutschland +49 (0)37296 930-200

Cable cross

3x0.34 mm²

internal load resistor

> 1kOhm

FIT / MTTF acc. to SIEMENS 29500

94,94 / 1202y

Errors and omissions exceptet