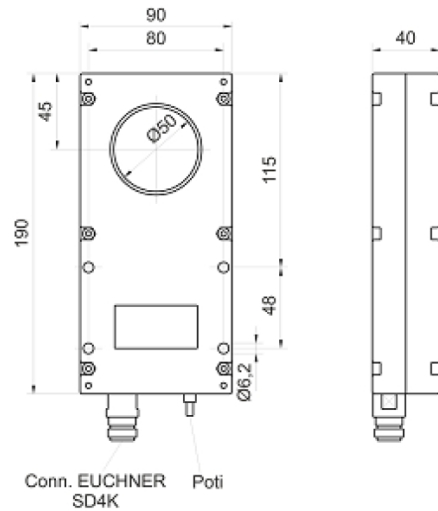
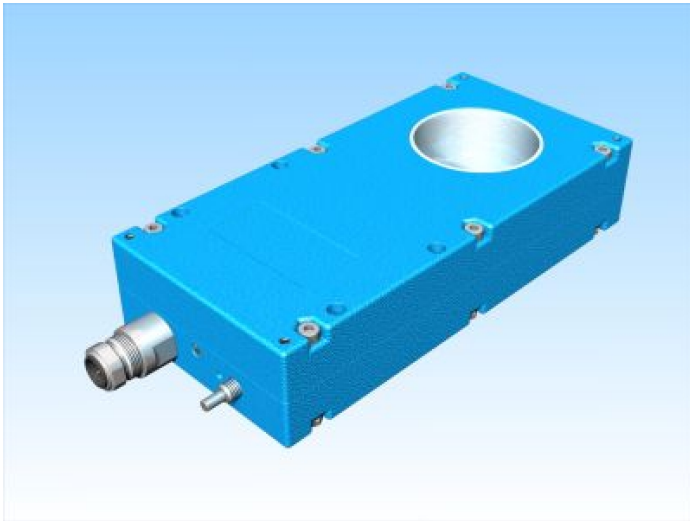


[Article Page](#)

Product Description

inductive ring sensor



Name
Order number
Matchcode
Mounting

KJR-D50FAN-DNA-VE
08317050259
9705-0259

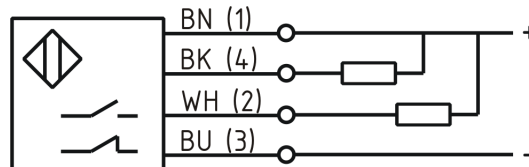
Switch type

non shielded
 Changeover
DC NPN

Signal Type
Connection

Connector

Connection diagramm



R 90 x 45 x 190

Dimension (in mm)
Technical Specification
Operating voltage
Max. ripple
Voltage drop
Max. load current
No load current
Leakage current
Switching frequency
Operating temperature
Switching state
Real sensitivity
Short-circuit proof
Overload protection
Reverse voltage protection
Protection category
EMC-level
Housing material
Termination
Notes

10 - 30 V DC
≤ 10 %
2,4 V
200 mA
15 mA
10 µA
500
-25 ° C to 70 ° C
LED
3,0 mm Kugel Fe
yes
yes
yes
IP67
DIN EN 60947-5-2:2008
Aluminum
Euchner pin-socket
Optional Relais Schaltgerät 08349020900



KJR-D50FAN-DNA-VE

Pulsotronic GmbH & Co. KG Neue Schichtstraße 14b 09366 Niederdorf Deutschland +49 (0)37296 930-200

Errors and omissions exceptet