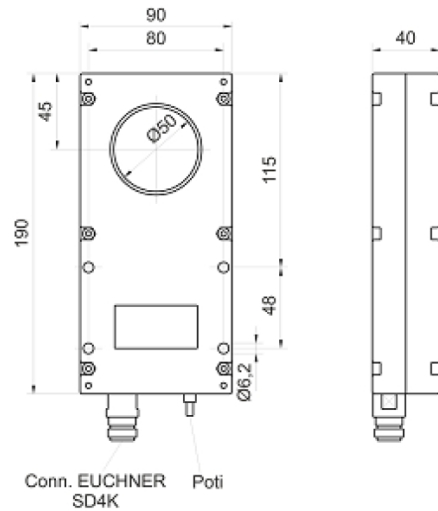
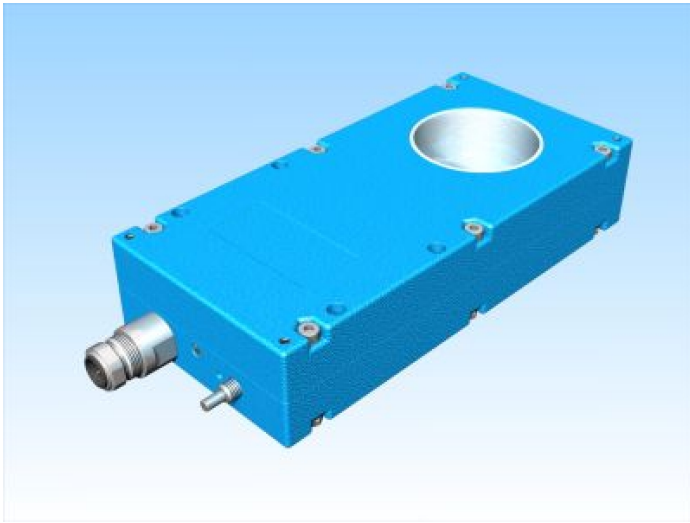


[Article Page](#)

Product Description

inductive ring sensor



Name  
Order number  
Matchcode  
Mounting

KJR-D50FAN-DNIA-VE  
08317010259  
9701-0259

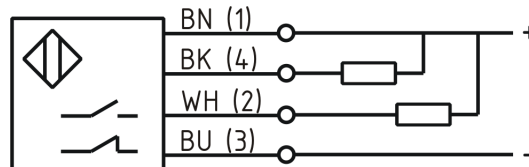
Switch type

non shielded  
 Changeover  
DC NPN

Signal Type  
Connection

Connector

Connection diagramm



R 90 x 45 x 190

Dimension (in mm)  
Technical Specification

Operating voltage  
Max. ripple  
Voltage drop  
Max. load current  
No load current  
Leakage current  
Switching frequency  
Operating temperature  
Switching state  
Real sensitivity  
Short-circuit proof  
Overload protection  
Reverse voltage protection  
Protection category  
EMC-level  
Housing material  
Notes

20 - 30 V DC  
≤ 10 %  
1,8 V  
50 mA  
25 mA  
50 µA  
100  
-25 ° C to 60 ° C  
LED  
1,0 mm Kugel Fe  
yes  
yes  
yes  
IP67  
DIN EN 60947-5-2:2008  
Aluminum  
Optional Relais Schaltgerät 08349020900

**Errors and omissions exceptet**