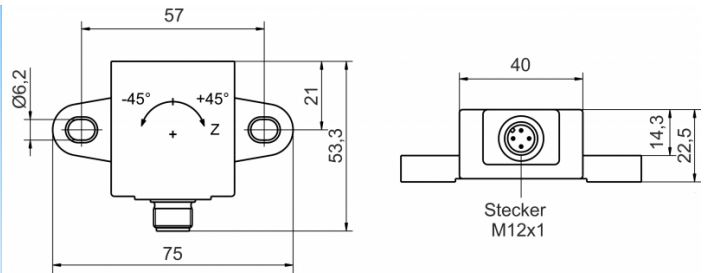
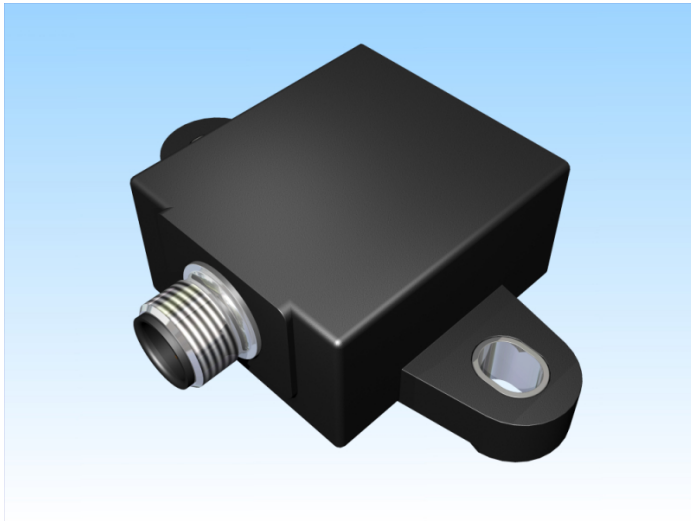


[Article Page](#)

Product Description

inclination sensor




Name

KN45-Q40KN-ANI-V2


Order number

08330000067

Mounting

 non shielded

Switch type

 analog

Signal Type

analog current

Connection

connector M12

Dimension (in mm)

Q 53,3 x 22,5 x 75

Technical Specification

Special features

analog current Output

1 channel

Operating voltage

9 - 30 V DC

No load current

≤ 16 mA

Treshold frequency

2 Hz

Operating temperature

-40 ° C to 85 ° C

Temperature drift

+/- 0,115 °/K

Switching state

LED

Analog output

Pulso_has1 4 ... 20 mA

Real sensitivity

typ. 177,8 μA/°

Time delay

200 ms

Resolution