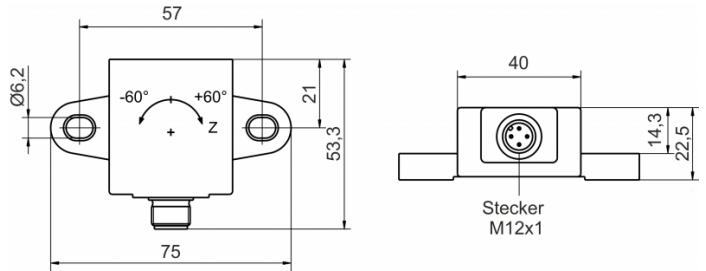
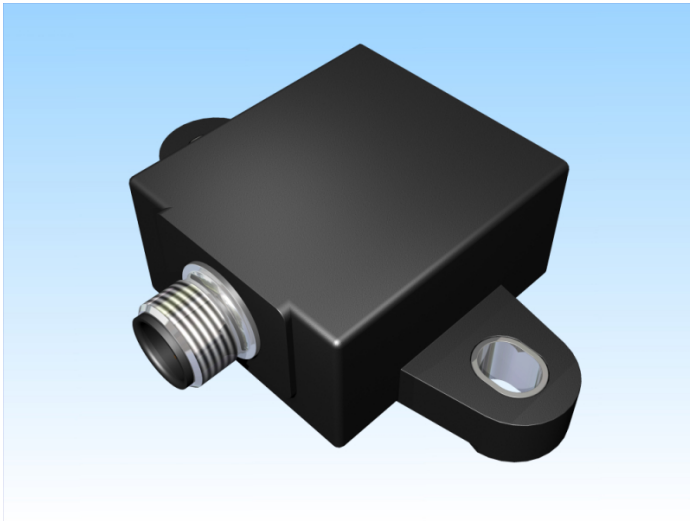




[Article Page](#)

Product Description

inclination sensor



Name  
 Order number  
 Switching distance  
 Mounting  
  
 Switch type  
  
 Signal Type  
 Connection  
 Dimension (in mm)  
 Technical Specification  
 Special features  
  
 Operating voltage  
 Max. ripple  
 Max. load current  
 No load current  
 Treshold frequency  
 Operating temperature  
 Temperature drift  
 Switching state  
 Analog output  
 Real sensitivity  
 Time delay  
 Resolution

KN60-Q40KN-ANI-V2  
 08330000080  
 60  
  
 non shielded  
  
 analog  
 analog current  
 connector M12  
 Q 53,3 x 22,5 x 75  
  
 analog current output  
 1 channel  
 9 - 30 V DC  
 ≤ 10 %  
 40 mA  
 ≤ 16 mA  
 2 Hz  
 -40 ° C to 85 ° C  
 +/- 0,012 °/K  
 LED  
 Pulso\_has14 ... 20 mA  
 typ. 133,3 µA  
 200 ms