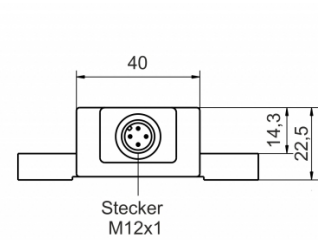
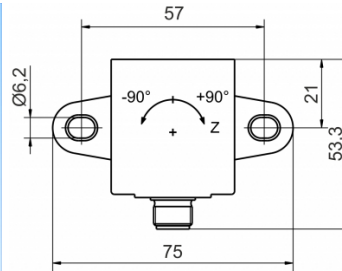
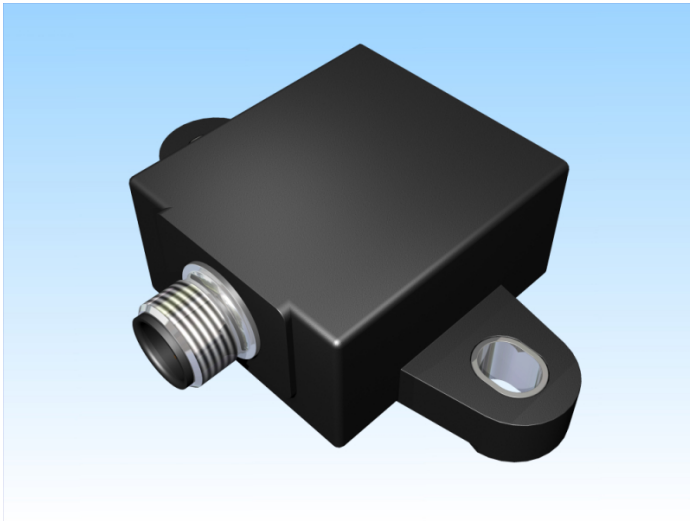


[Article Page](#)

Product Description

inclination sensor




Name

KN90-Q40KN-ANU-V2


Order number

08330000095

Mounting

 non shielded

Switch type

 analog

Signal Type

Analog Voltage

Connection

connector M12

Dimension (in mm)

Q 53,3 x 22.5 x 75

Technical Specification

Special features

analog Output voltage

1 channel

Operating voltage

10 - 30 V DC

Max. load current

20 mA

No load current

≤ 14 mA

Treshold frequency

2 Hz

Operating temperature

-40 ° C to 85 ° C

Temperature drift

+/- 0,115 °/K

Swiching state

LED

Analog output

Pulso\_has1 1 ... 9 Volt

Real sensitivity

typ. 44,44 mV/°

Time delay

200 ms

Resolution

typ. = 450 Ohm

FIT / MTTF acc. to SIEMENS 29500

315,4 / 362y

**Errors and omissions exceptet**