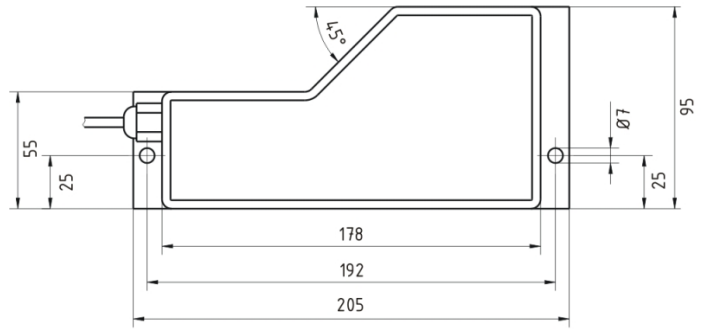
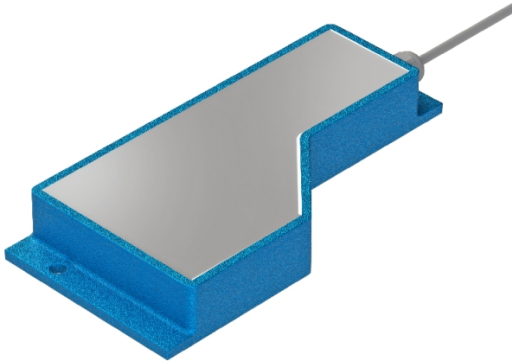


[Article Page](#)

Product Description


inductive flat pack sensor




Name
Order number
Matchcode
Mounting

MESEP AR 95R F2 5m
08317690940
9869-0940

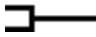
Switch type

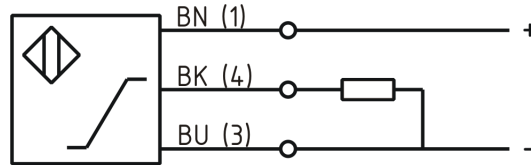
 shielded

Signal Type
Connection

 analog
Like switching device

Connection diagramm

 Cable



Dimension (in mm)
Technical Specification
Operating temperature
Analog output
Protection category
EMC-level
Housing material
Cable length
Utilisation category
Cable material
Cable cross

Q 95 x 30 x 205
-10 ° C to 60 ° C
Pulso_has1
IP65
nach DIN EN 60947-5-2: 2008
Aluminum
5 m
DC13
PVC
3x0.14 mm²

Errors and omissions exceptet