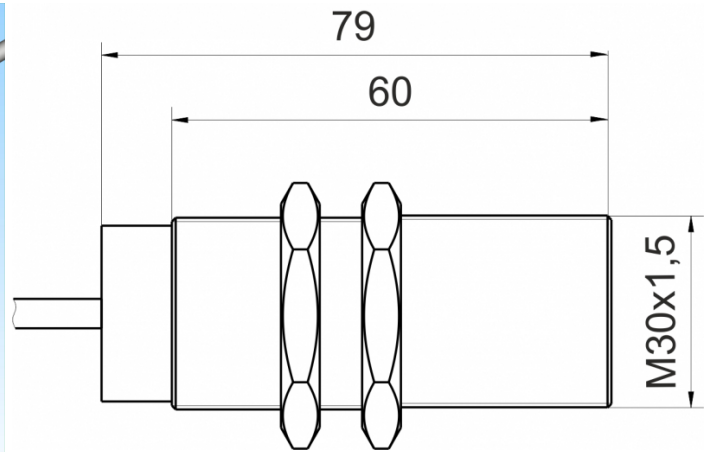
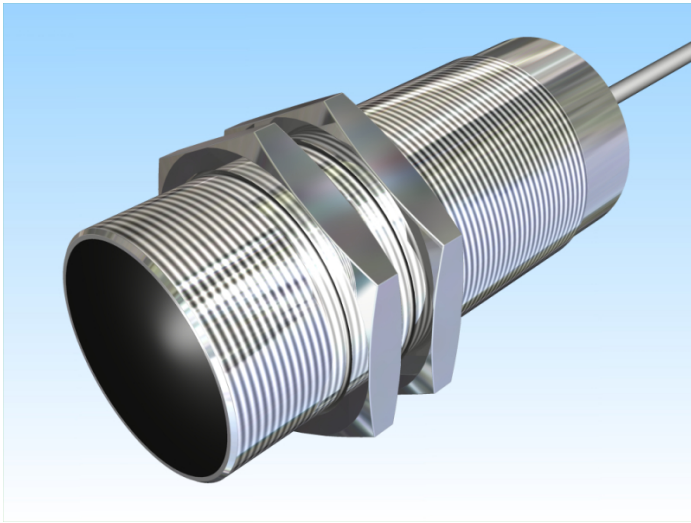


[Article Page](#)

Product Description

inductive sensor DC



Name
 Order number
 Switching distance
 Mounting

 Switch type




 Signal Type
 Connection

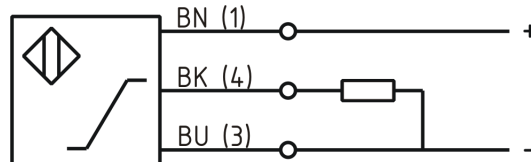
 Connection diagramm

 Dimension (in mm)
 Technical Specification
 Special features

 Operating voltage
 Max. ripple
 No load current
 Switching frequency
 Temperature drift
 Repeat accuracy
 Linearity
 Time delay
 Protection category
 EMC-level
 Housing material
 Material active face
 Cable length
 Utilisation category
 Cable material
 Nominal operating voltage
 Cable cross
 internal load resistor

SJ10-M30MB80-ANUI
 08313103010
 from 5 mm to 10 mm

-  shielded
-  analog
Analog Current/Voltage
-  Cable



fine-pitch thread M30 x 80

Output Voltage 0 ... 10 Volt
 Output Current 0 ... 20 mA
 18 - 30 VDC
 ≤ 10 %
 ≤ 15 mA
 100 Hz
 +/- 5 %
 < 0,02 %
 ≤ 10 %
 300 ms
 IP67
 DIN EN 60947-5-7:2004-06
 Brass, nickel plated
 PBT
 2 m
 DC 13
 PVC LIYY grau (grey)
 24 V DC
 4x0.5 mm²
 > 1 kOhm

Errors and omissions exceptet